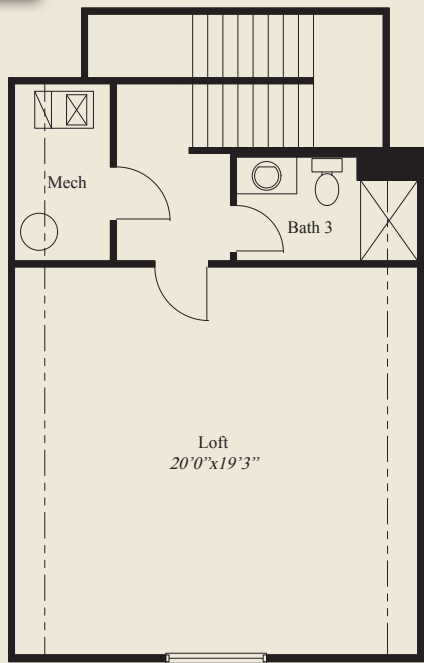




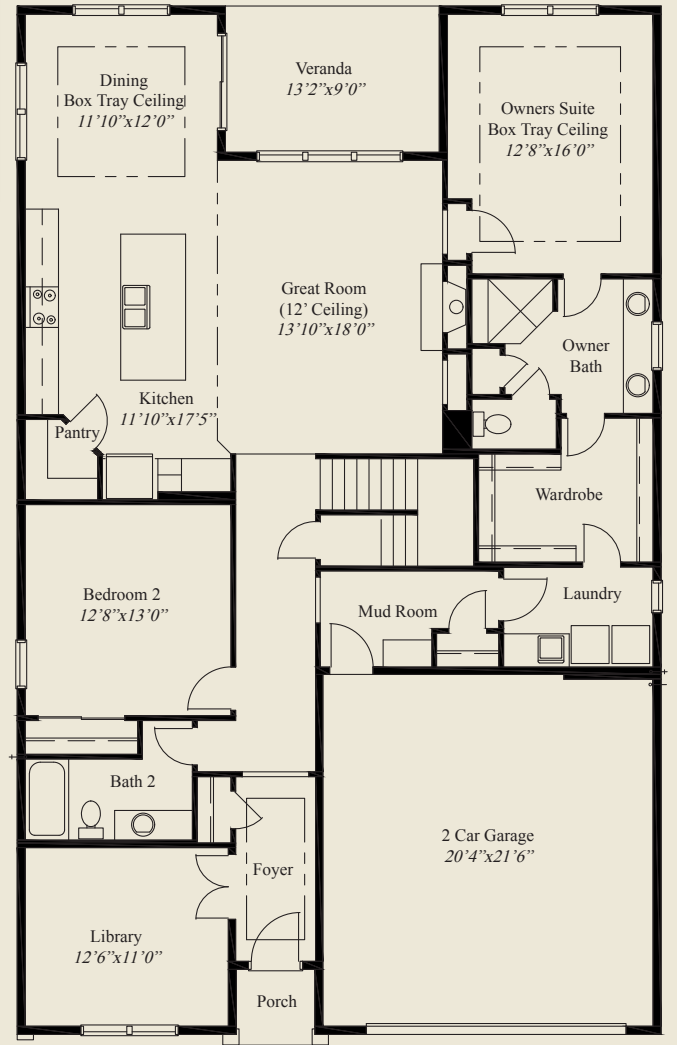
- ### Plan Information
- 2,352 SqFt
 - 2 Bedrooms
 - 3 Baths
 - 2 Car Garage
 - Low Step Entry Easy Access Living
 - 12' Ceiling Great Room
 - 10' Ceilings, 8' Doors on 1st Floor
 - Kitchen w/Walk-in Pantry
 - Large Rear Covered Veranda
 - Library w/Double Doors
 - Owners Suite w/Box Tray Ceiling
 - Wardrobe w/Door to Laundry
 - Guest Bedroom w/Full Bath
 - Private Mud Entry
 - Large Second Floor Loft w/Full Bathroom

Home Information

This custom patio home features low step entry easy access with open living and a 12' ceiling great room. 10' ceilings and 8' doors are throughout the first floor. The kitchen has a huge walk-in pantry and informal dining with a box tray ceiling. The owners suite includes a box tray ceiling, oversized shower and spacious wardrobe with a door to the laundry. A private mud entry, rear covered veranda, library w/ double doors, guest bedroom w/full bath, and a second floor loft w/full bathroom, complete this beautiful home.



SECOND FLOOR 556 SQ.FT.



FIRST FLOOR 1,796 SQ.FT.

© Romanelli & Hughes Building Co.
 All home plans present on this brochure are protected by copyright. Reproduction either in whole or in part without written permission is strictly prohibited. All renderings and floor plans are artists' conceptions and are not intended to be an actual depiction of the home or its surroundings.

