

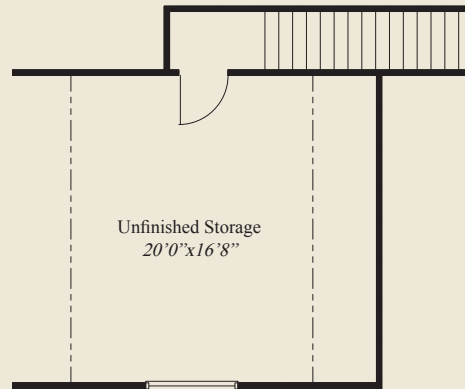


- ### Plan Information
- 2,168 SqFt
 - 2 Bedrooms
 - 2 Baths
 - 3 Car Garage w/Storage
 - 12' Ceiling Great Room
 - 10' Ceilings, 8' Doors on 1st Floor
 - Tray Ceilings in Foyer, Dining, Owners Suite
 - Kitchen w/Chefs Pantry
 - Separate Laundry w/Door to Owners Suite
 - Owners Suite w/Huge Shower & Wardrobe
 - Library w/French Doors to Foyer
 - Additional Storage Closet on Main Floor
 - Large Second Floor Unfinished Storage Loft

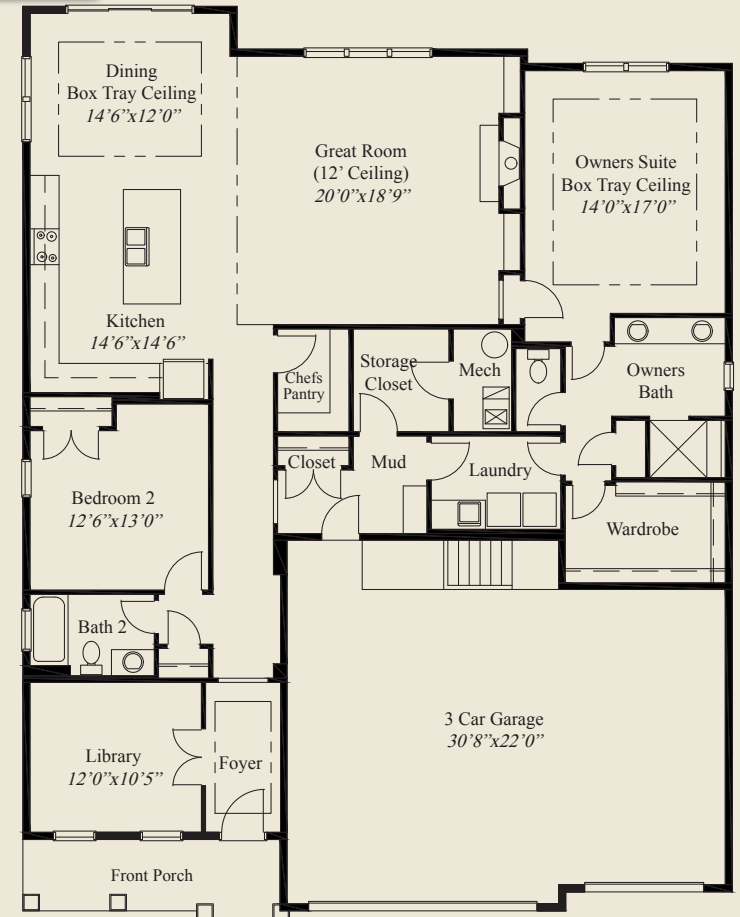
© Romanelli & Hughes Building Co.
 All home plans present on this brochure are protected by copyright. Reproduction either in whole or in part without written permission is strictly prohibited. All renderings and floor plans are artists' conceptions and are not intended to be an actual depiction of the home or its surroundings.

Home Information

This custom patio home features low step entry easy access with open living and a 12' ceiling great room. 10' ceilings and 8' doors are throughout the first floor. Detailed tray ceilings are in the foyer, dining and owners suite. The kitchen includes a chefs pantry. The owners suite has a shower and spacious wardrobe and a door to a separate laundry. A private mud entry, library w/french doors, first floor guest bedroom w/full bath, first floor storage closet, and a second floor unfinished storage loft, complete this beautiful home.



SECOND FLOOR LOFT



FIRST FLOOR 2,168 SQ.FT.

