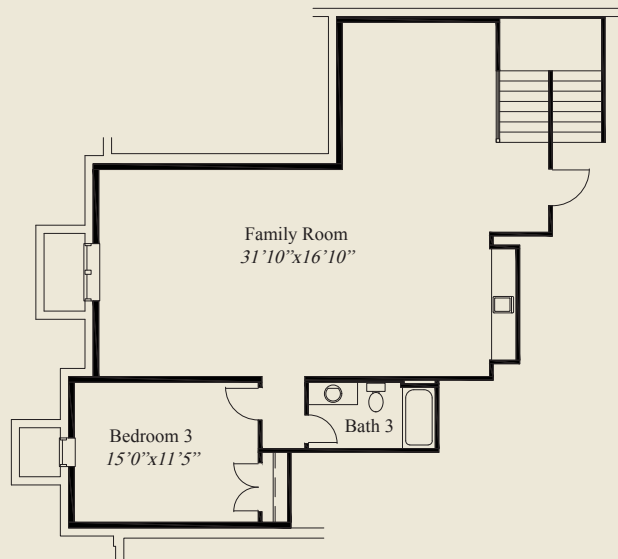




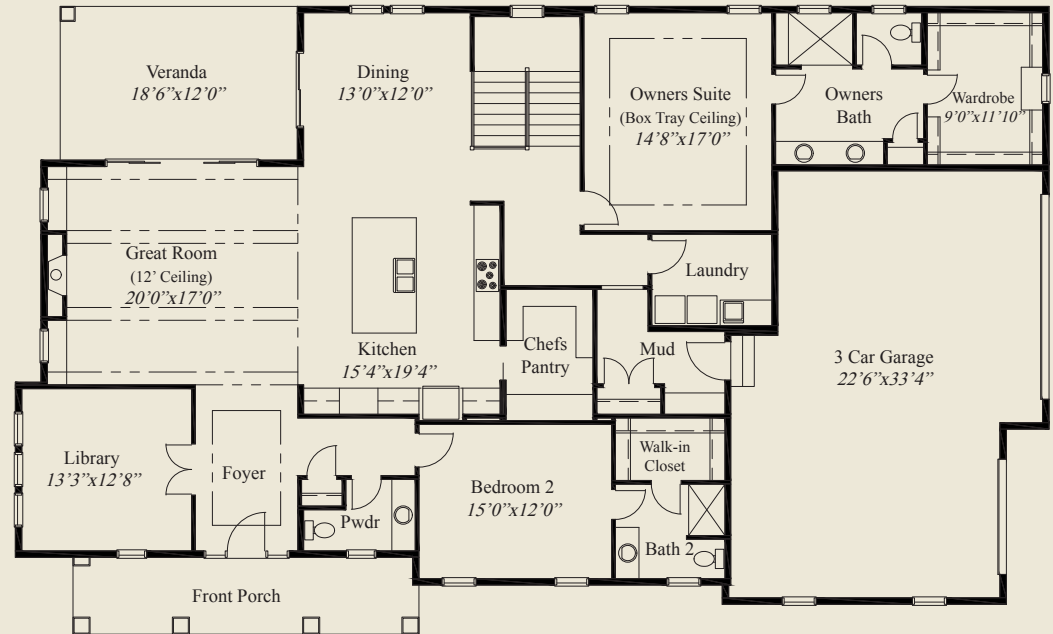
This custom home is on a corner lot and features a 12' beamed ceiling great room, 10' first floor ceilings w/8' doors, and box tray ceilings in the foyer and owners suite. The spacious foyer has glass french doors to the library. The large kitchen includes a chefs pantry and dining adjacent to a covered veranda. The owners suite features an oversized shower and spacious wardrobe. A first floor guest suite w/private bath, & walk-in closet, along with switchback easy step stairs to a finished lower level w/family room, 3rd bedroom & bath, complete this beautiful home.

**Plan Information**

- 3,604 SqFt
- 3 Bedrooms
- 3 1/2 Baths
- 3 Car Garage (Oversize)
- Corner Lot
- 10' Ceilings, 8' Doors on First Floor
- Great Room w/12' Beamed Ceiling
- Large Kitchen w/Chefs Pantry
- Owners Suite w/Box Tray Ceiling
- Owners Bath w/Huge Shower & Wardrobe
- Library w/Glass French Doors
- Covered Rear Veranda
- 1st Flr Guest Suite w/Private Bath & Walk-in Clst
- Mud Room w/Bench & Closet
- Switchback Easy Step Stairs to LL
- Finished LL w/Family Rm, Bedroom, Full Bath



LOWER LEVEL 1,082 SQ.FT.



FIRST FLOOR 2,522 SQ.FT.



© Romanelli & Hughes Building Co.  
 All home plans present on this brochure are protected by copyright. Reproduction either in whole or in part without written permission is strictly prohibited. All renderings and floor plans are artists' conceptions and are not intended to be an actual depiction of the home or its surroundings.