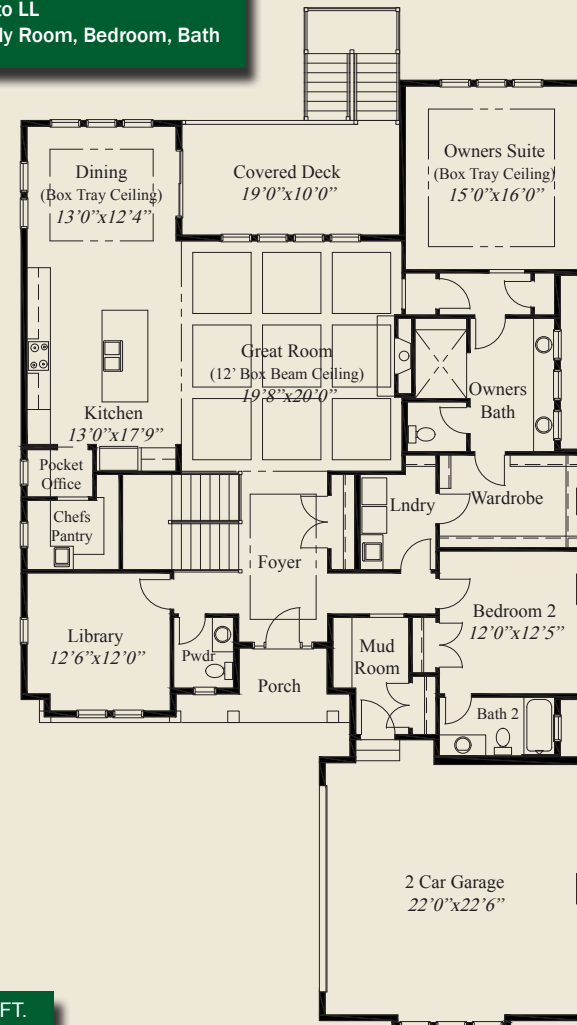




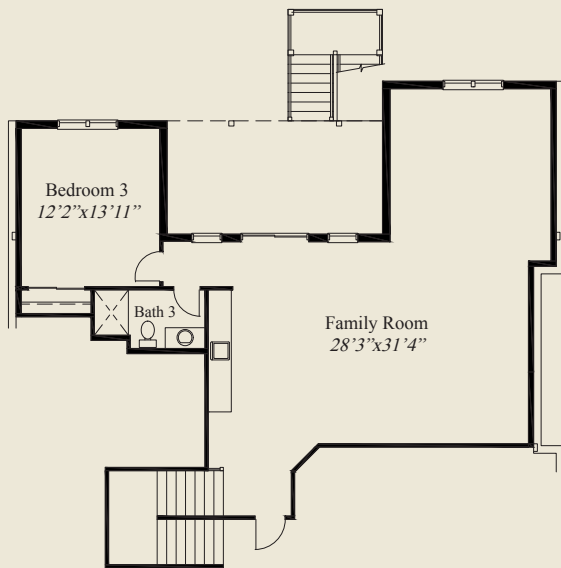
**Plan Information**

- 3,468 SqFt
- 3 Bedrooms
- 3 1/2 Baths
- 2 Car Garage
- 10' Ceilings, 8' Doors on First Floor
- 12' Box Beam Ceiling in Great Room
- Large Kitchen w/Chefs Pantry & Pocket Office
- Box Tray Ceilings in Foyer, Dining, Owners Suite
- Owners Suite w/Large Vanity, Shower & Wardrobe
- Covered Deck
- First Floor Guest Suite w/Private Bath
- Switchback Easy Step Stairs to LL
- Finished LL Walk-out w/Family Room, Bedroom, Bath

This custom home features open entertaining and living, and a 12' detailed ceiling in the great room. 10' ceilings and 8' doors are throughout the rest of the first floor. Box tray ceilings adorn the foyer, dining, and the spacious owners suite, which features a spacious vanity, oversized shower and huge wardrobe. The kitchen includes a chefs pantry and pocket office. A convenient library, covered deck, guest suite w/private bath, and a finished lower level walk-out w/switchback easy step stairs, family room, and 3rd bedroom & bath, all add to the appeal of this beautiful home.



FIRST FLOOR 2,377 SQ.FT.



LOWER LEVEL 1,091 SQ.FT.



© Romanelli & Hughes Building Co.  
 All home plans present on this brochure are protected by copyright. Reproduction either in whole or in part without written permission is strictly prohibited. All renderings and floor plans are artists' conceptions and are not intended to be an actual depiction of the home or its surroundings.