



Plan Information

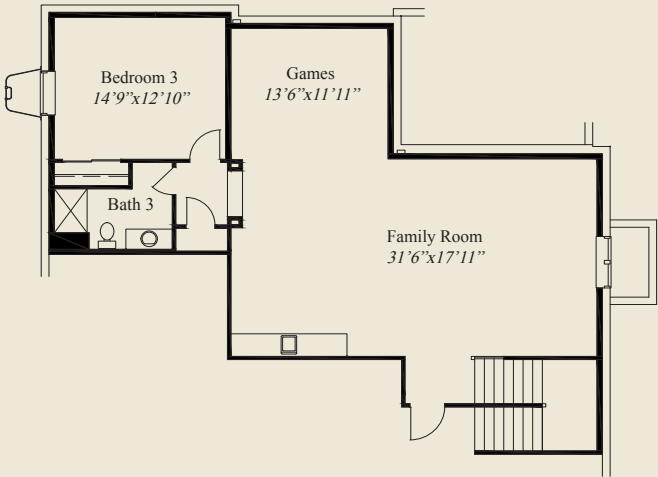
- 3,574 SqFt
- 3 Bedrooms
- 3 1/2 Baths
- 2 Car Garage
- 10' Ceilings, 8' Doors on First Floor
- Great Room & Kitchen w/12' Beamed Ceiling
- Large Kitchen w/Walk-thru Chefs Pantry
- Detailed Ceilings in the Dining and Owners Suite
- Owners Suite w/Oversize Shower & Free Standing Tub
- Spacious Wardrobe w/Door to Laundry
- First Floor Guest Suite w/Private Bath
- Private Library w/French Glass Doors
- Switchback Stairs to LL
- Covered Rear Veranda
- Finished LL w/Family Room, Bedroom, Bath



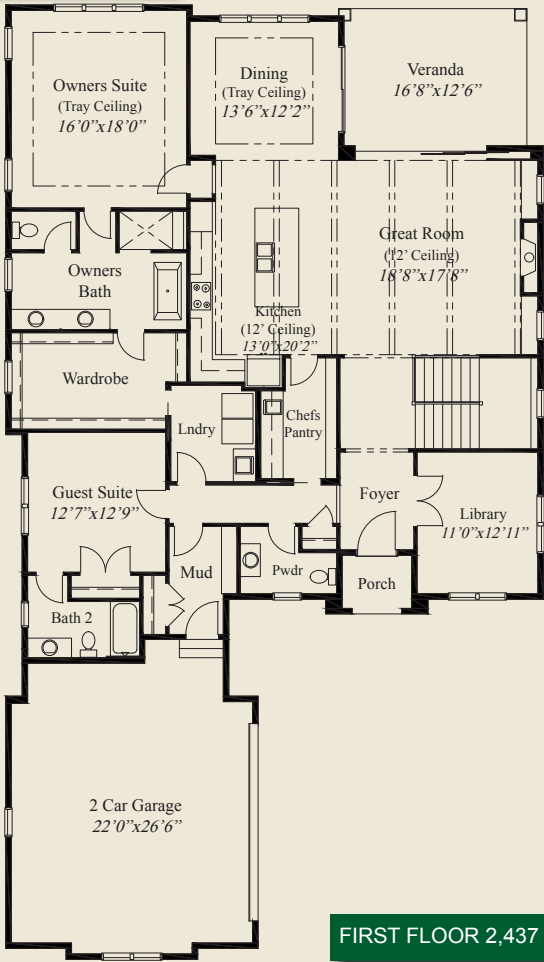
Home Information

This custom home features 10' ceilings, 8' doors, and a 12 beamed ceiling in the great room and kitchen. Detailed ceilings adorn the dining area and owners suite. The owners suite includes a large wardrobe w/ door to laundry, an oversized shower, and a free standing tub. A private library w/glass french doors, large kitchen w/walk-thru chefs pantry, covered veranda, a 1st floor guest suite w/private bath and switch back stairs to the finished lower level with family room and third bedroom and bath, all add to the appeal of this beautiful home.

© Romanelli & Hughes Building Co.  
All home plans present on this brochure are protected by copyright. Reproduction either in whole or in part without written permission is strictly prohibited. All renderings and floor plans are artists' conceptions and are not intended to be an actual depiction of the home or its surroundings.



LOWER LEVEL 1,137 SQ.FT.



FIRST FLOOR 2,437 SQ.FT.

