



**Plan Information**

- 2,823 SqFt
- 3 Bedrooms
- 3 1/2 Baths
- 2 Car Garage
- Large Front Porch
- 10' Ceilings, 8' Doors First Floor
- 12' Beamed Ceiling Great Room
- Dining & Owners Suite w/Box Tray Ceiling
- Owners Suite w/Oversized Shower & Wardrobe
- Owners Suite w/His & Hers Vanities
- Kitchen w/Walk-in Pantry & Pocket Office
- Guest Suite w/Private Bath
- Mud Room w/Bench & Closet
- Covered Rear Deck w/12' Ceiling
- Finished LL w/Daylight Windows
- LL Family Room, Bedroom, Full Bath

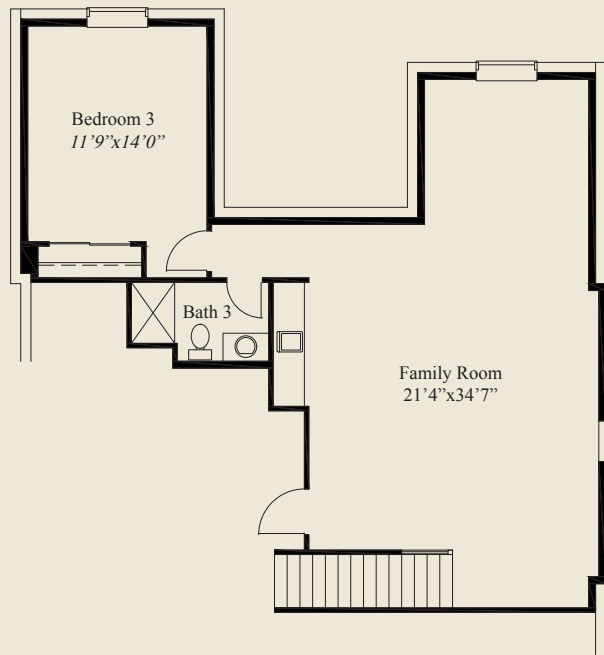


**Home Information**

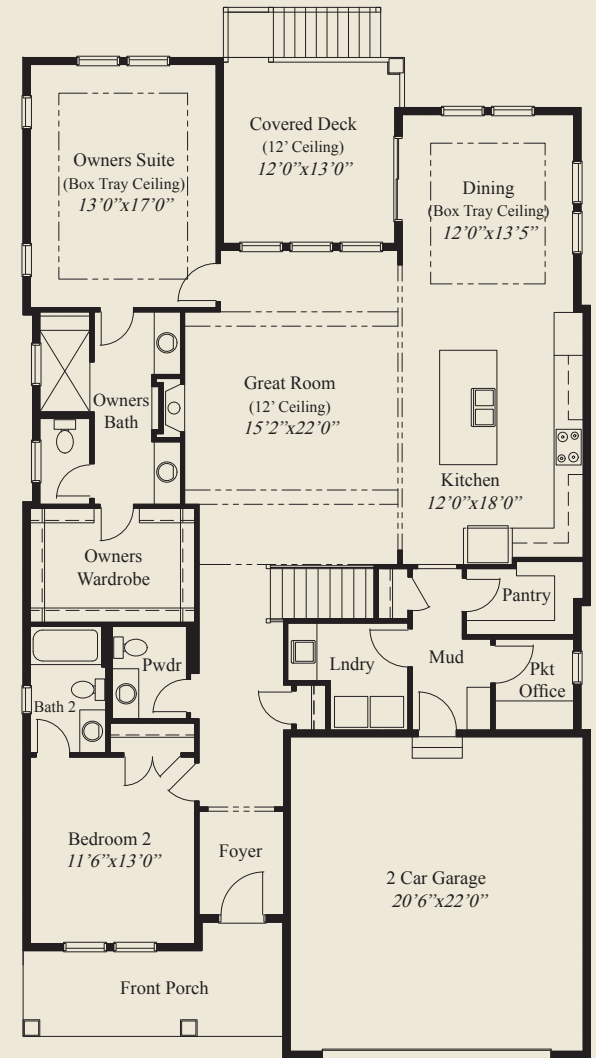
This custom patio home features a 12' beamed ceiling great room and 1st flr 10' ceilings and 8' doors. Tray ceilings adorn the dining & owners suite. The kitchen includes a large walk-in pantry & pocket office. The owners suite has a large shower w/ seat, his and hers vanities and a huge wardrobe. A guest suite w/ private bath, a covered rear deck w/12' ceiling, large mud room w/ bench, and a finished lower level w/ daylight windows, family room and 3rd bedroom w/full bath, complete this beautiful home.

© Romanelli & Hughes Building Co.

All home plans present on this brochure are protected by copyright. Reproduction either in whole or in part without written permission is strictly prohibited. All renderings and floor plans are artists' conceptions and are not intended to be an actual depiction of the home or its surroundings.



LOWER LEVEL 900 SQ.FT.



FIRST FLOOR 1,923 SQ.FT.

