

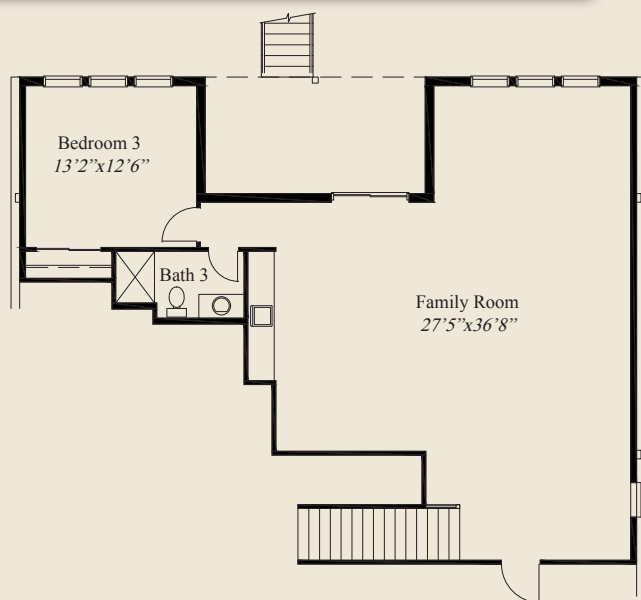


Plan Information

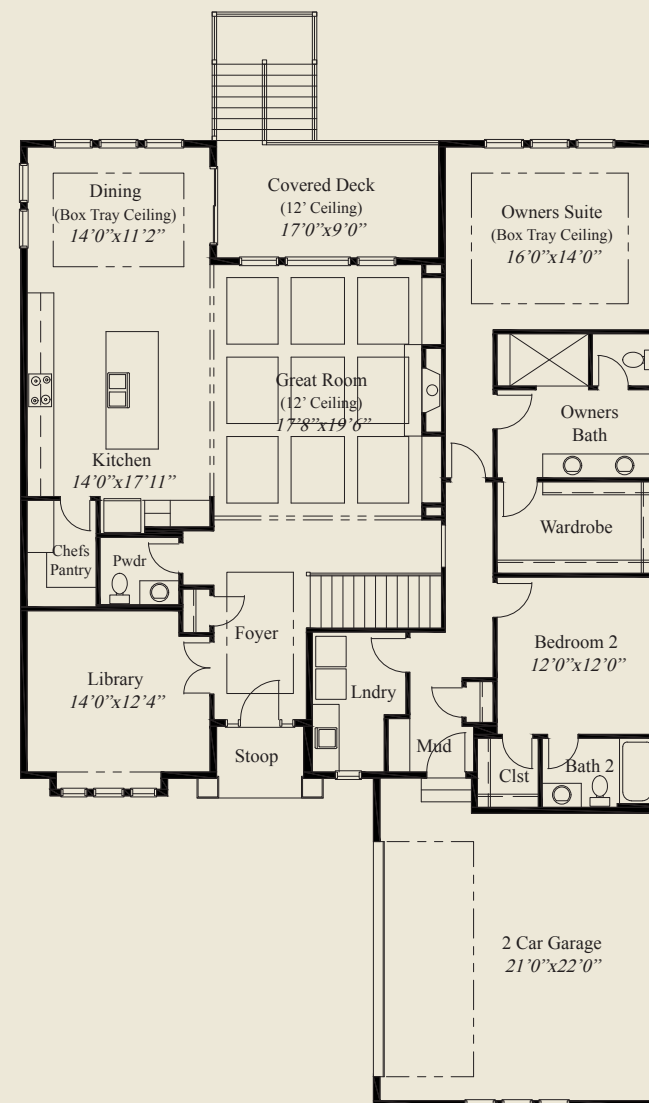
- 3,407 SqFt
- 3 Bedrooms
 - 3 1/2 Baths
 - 2 Car Garage
 - 10' Ceilings, 8' Doors on First Floor
 - 12' Coffered Ceiling Great Room
 - Kitchen w/Chefs Pantry
 - Tray Ceilings in Foyer, Dining, Owners Suite
 - Owners Suite w/Huge Shower, Wardrobe
 - First Floor Guest Suite w/Private Bath
 - Library w/Glass French doors
 - Covered Deck w/12' Ceiling, Stairs to Patio
 - Mud Room w/Adjacent Laundry
 - Finished LL Walk-out w/Family Room
 - LL Wet Bar & 3rd Bedroom & Full Bath



This custom ranch features a 12' coffered ceiling great room, & tray ceilings in the foyer, dining, & owners suite. 10' ceilings and 8' doors are throughout the rest of the first floor. The kitchen includes a chefs pantry. The spacious owners suite has a deluxe bath w/ huge shower, and a large wardrobe. A 1st flr guest suite w/private bath, a covered deck w/12' ceiling & stairs to the lower patio, library w/glass french doors, private mud entry, and a finished lower level walk-out with family room, wet bar, and 3rd bedroom and full bath, all add to the appeal of this beautiful home.



LOWER LEVEL 1,163 SQ.FT.



FIRST FLOOR 2,244 SQ.FT.



© Romanelli & Hughes Building Co.
All home plans present on this brochure are protected by copyright. Reproduction either in whole or in part without written permission is strictly prohibited. All renderings and floor plans are artists' conceptions and are not intended to be an actual depiction of the home or its surroundings.

To Inquire About This Home Contact Cheryl Olson (614) 206-5281