



Plan Information

- 2,884 SqFt
- 3 Bedrooms
- 3 1/2 Baths
- 2 Car Garage
- 10' Ceilings, 8' Doors First Floor
- 12' Beamed Ceiling Great Room
- Dining w/Box Tray Ceiling
- Owners Suite w/Tray Ceiling, Shower w/Seat
- Large Wardrobe w/Door to Laundry
- Spacious Kitchen w/Large Walk-in Pantry
- Guest Bedroom w/Private Bath
- Mud Room w/Bench, Drop Counter, Closet
- Covered Rear Deck w/12' Ceiling
- Finished LL w/Daylight Windows
- LL Family Room, Bedroom, Full Bath

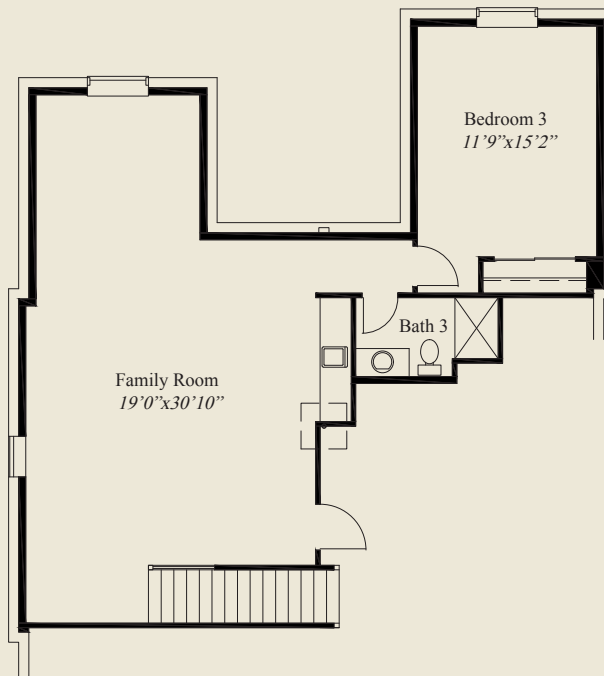


Home Information

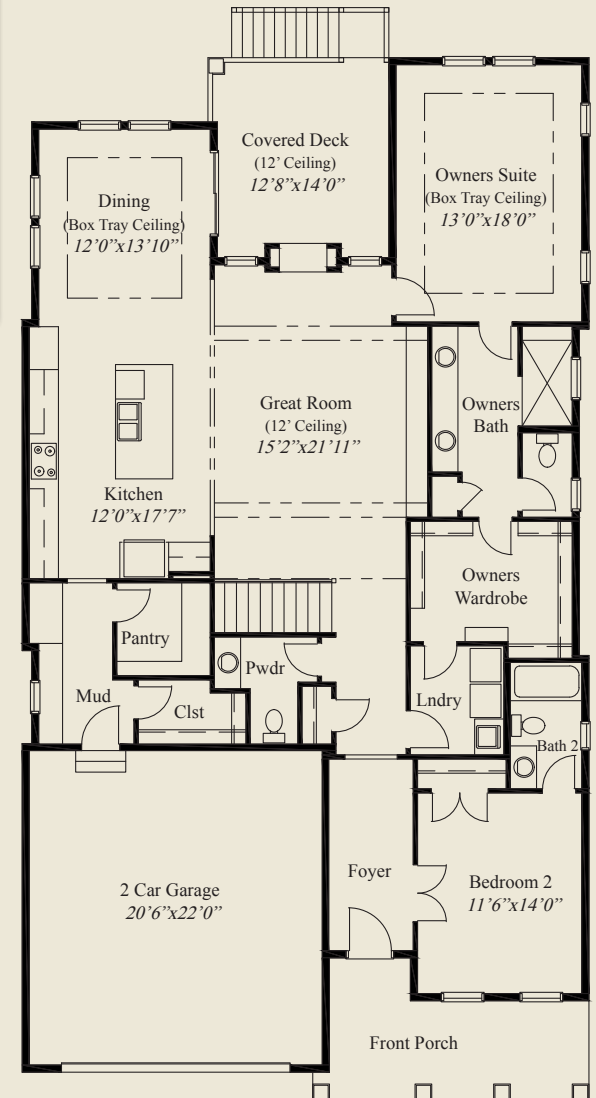
This custom patio home features a 12' beamed ceiling great room and 1st flr 10' ceilings and 8' doors. The owners suite has a tray ceiling, large shower w/seat, and a huge wardrobe w/laundry door. The kitchen includes a large walk-in pantry. A guest bedroom w/private bath, a covered rear deck w/12' ceiling, large mud room w/bench, drop counter & walk-in closet, and a finished lower level with daylight windows, family room, and 3rd bedroom w/full bath, complete this beautiful home.

© Romanelli & Hughes Building Co.

All home plans present on this brochure are protected by copyright. Reproduction either in whole or in part without written permission is strictly prohibited. All renderings and floor plans are artists' conceptions and are not intended to be an actual depiction of the home or its surroundings.



LOWER LEVEL 912 SQ.FT.



FIRST FLOOR 1,972 SQ.FT.

