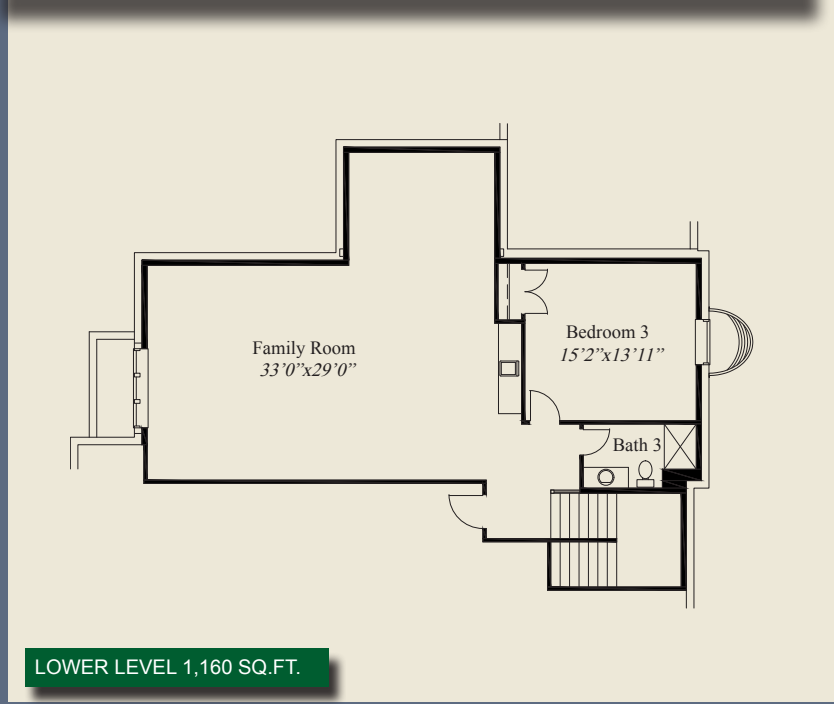


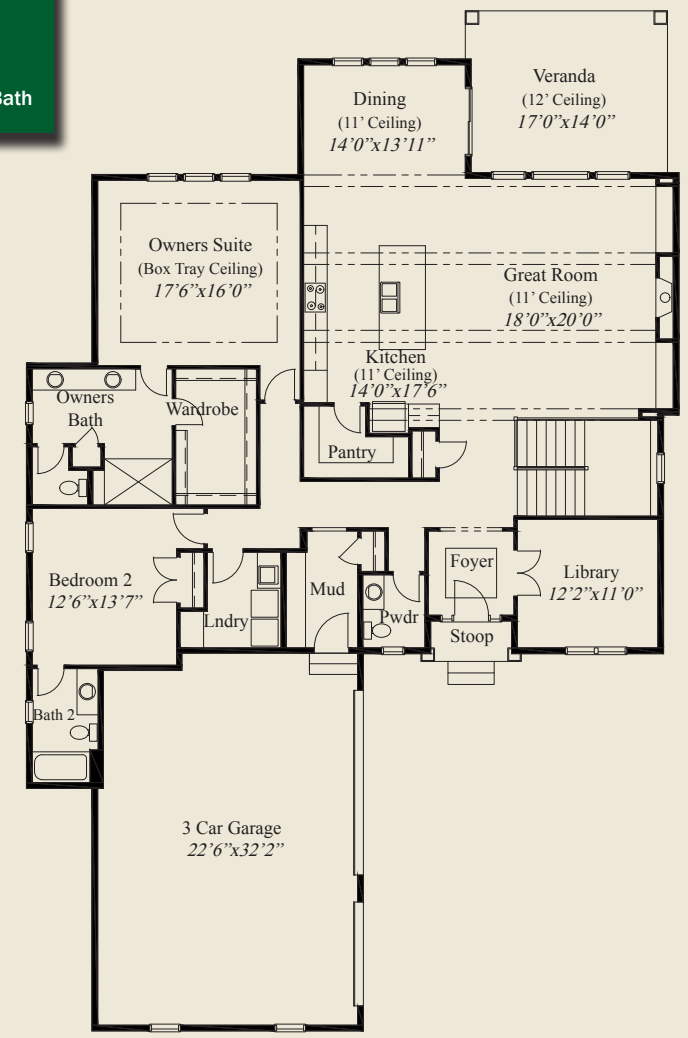


This custom home features open entertaining and living, and a 11' beamed ceiling in the great room, kitchen & dining area. 10' ceilings and 8' doors are throughout the rest of the first floor. The library has glass french doors. Box tray ceilings adorn the foyer and the spacious owners suite, which features an oversized shower and huge wardrobe. The kitchen includes a large walk-in pantry. A covered 12' ceiling veranda, windowed switch back stairs, guest suite w/private bath, and a finished lower level with family room, bedroom, and full bath, all add to the appeal of this beautiful home.

- ### Plan Information
- 3,605 SqFt
  - 3 Bedrooms
  - 3 1/2 Baths
  - 3 Car Garage
  - 10' Ceilings, 8' Doors on First Floor
  - 11' Ceiling in Great Room, Kitchen, Dining
  - Large Kitchen w/Walk-in Pantry
  - Box Tray Ceilings in Foyer & Owners Suite
  - Owners Suite w/Huge Shower & Wardrobe
  - Library w/Glass French Doors
  - Covered Veranda w/12' Ceiling
  - First Floor Guest Suite w/Private Bath
  - Switch Back Stairs w/Window
  - Finished LL w/Family Room, Bedroom, Bath



**FIRST FLOOR 2,445 SQ.FT.**



© Romanelli & Hughes Building Co.  
 All home plans present on this brochure are protected by copyright. Reproduction either in whole or in part without written permission is strictly prohibited. All renderings and floor plans are artists' conceptions and are not intended to be an actual depiction of the home or its surroundings.