



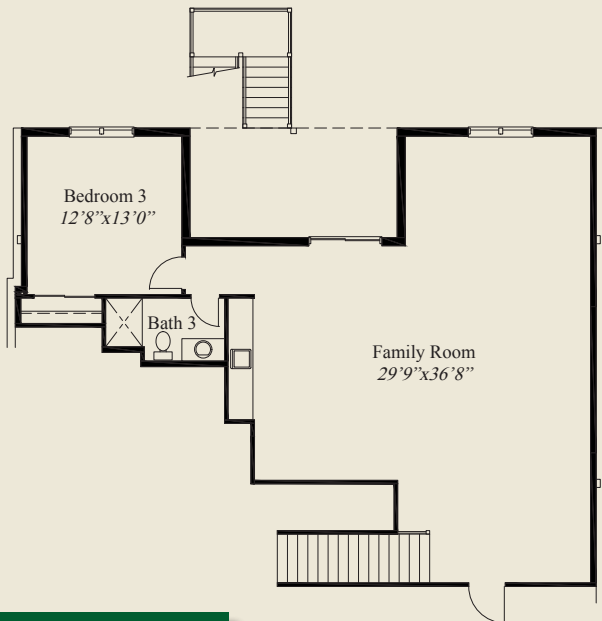
Plan Information

- 3,414 SqFt
- 3 Bedrooms
- 3 1/2 Baths
- 2 Car Garage
- 10' Ceilings, 8' Doors on First Floor
- 12' Detailed Ceiling in Great Room
- Large Kitchen w/Chefs Pantry
- Box Tray Ceilings in Foyer, Dining, Owners Suite
- Owners Suite w/Huge Shower & Wardrobe
- Library w/11' Ceiling & Glass French Doors
- Covered Deck w/12' Ceiling
- First Floor Guest Suite w/Private Bath
- Finished LL Walk-out w/Family Room, Bedroom, Bath

This custom home features open entertaining and living, and a 12' detailed ceiling in the great room. 10' ceilings and 8' doors are throughout the rest of the first floor. The library has an 11' ceiling & glass french doors. Box tray ceilings adorn the foyer, dining, and the spacious owners suite, which features an oversized shower and huge wardrobe. The kitchen includes a chefs pantry. A covered 12' ceiling deck, guest suite w/private bath, and a finished lower level walk-out with family room, 3rd bedroom & bath, all add to the appeal of this beautiful home.



FIRST FLOOR 2,246 SQ.FT.



LOWER LEVEL 1,168 SQ.FT.



© Romanelli & Hughes Building Co.
 All home plans present on this brochure are protected by copyright. Reproduction either in whole or in part without written permission is strictly prohibited. All renderings and floor plans are artists' conceptions and are not intended to be an actual depiction of the home or its surroundings.