



Plan Information

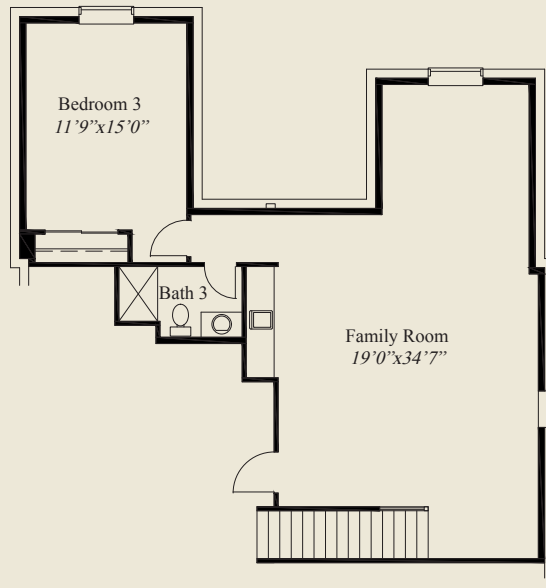
- 2,888 SqFt
- 3 Bedrooms
- 3 1/2 Baths
- 2 Car Garage
- 10' Ceilings, 8' Doors First Floor
- 12' Beamed Ceiling Great Room
- Dining w/Box Tray Ceiling
- Owners Suite w/Box Tray Ceiling, Shower w/Seat
- Owners Bath w/Oversized Shower & Vanity
- Huge Wardrobe
- Spacious Kitchen
- Guest Bedroom/Flex Room w/Private Bath
- Large Mud Room w/Bench & Walk-in Pantry
- Covered Rear Deck w/12' Ceiling
- Finished LL w/Daylight Windows

Home Information

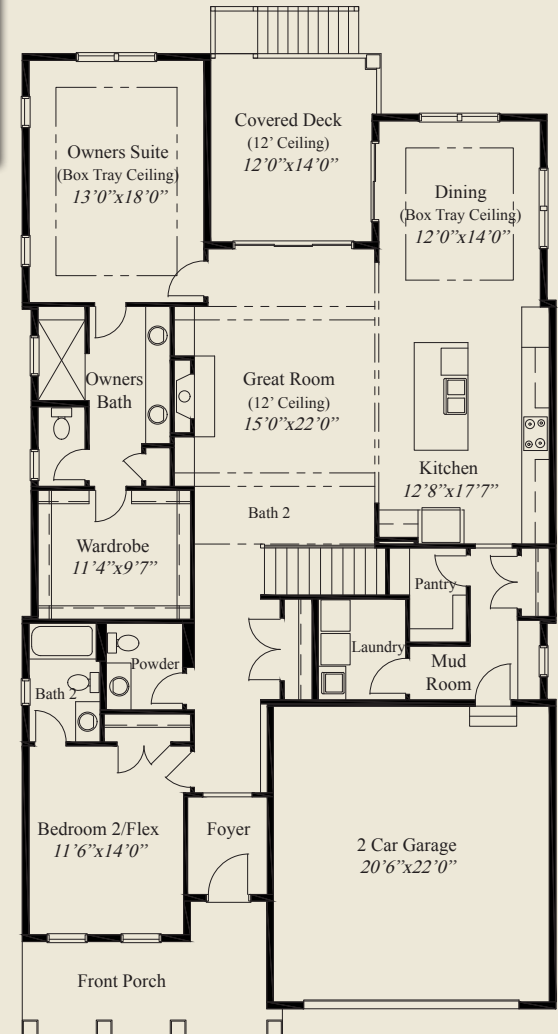
This custom patio home features a 12' beamed ceiling great room and 10' ceilings and 8' doors on the first floor. A large mud room includes a bench and a walk-in pantry as you enter the spacious kitchen. The owners suite has a box tray ceiling, oversized shower w/seat, and a large wardrobe. A guest bedroom/flex room w/private bath, a covered deck w/12' ceiling, and a finished LL with daylight windows, family room, and 3rd bedroom w/full bath, complete this beautiful home.

© Romanelli & Hughes Building Co.

All home plans present on this brochure are protected by copyright. Reproduction either in whole or in part without written permission is strictly prohibited. All renderings and floor plans are artists' conceptions and are not intended to be an actual depiction of the home or its surroundings.



LOWER LEVEL 914 SQ.FT.



FIRST FLOOR 1,974 SQ.FT.

