



Plan Information

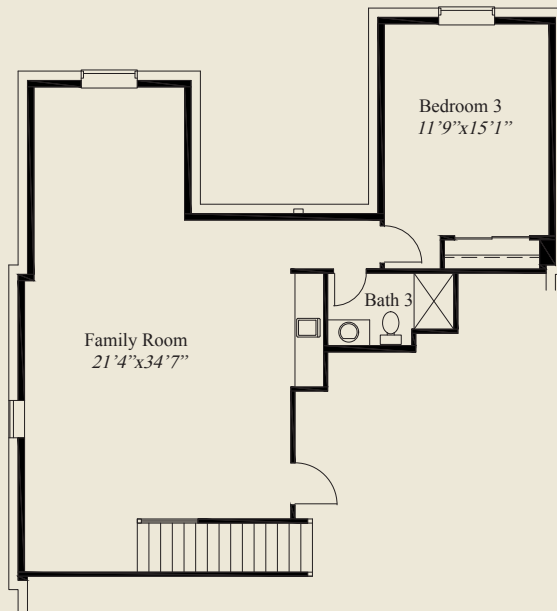
- 2,884 SqFt
- 3 Bedrooms
- 3 1/2 Baths
- 2 Car Garage
- 10' Ceilings, 8' Doors First Floor
- 12' Beamed Ceiling Great Room
- See-Thru Fireplace between Great Room & Deck
- Dining w/Box Tray Ceiling
- Owners Suite w/Box Tray Ceiling, Shower w/Seat
- Large Wardrobe w/Door to Laundry
- Spacious Kitchen w/Large Walk-in Pantry
- Guest Bedroom/Flex Room w/Private Bath
- Large Mud Room w/Bench & Drop Counter
- Covered Rear Deck w/12' Ceiling
- Finished LL w/Daylight Windows

Home Information

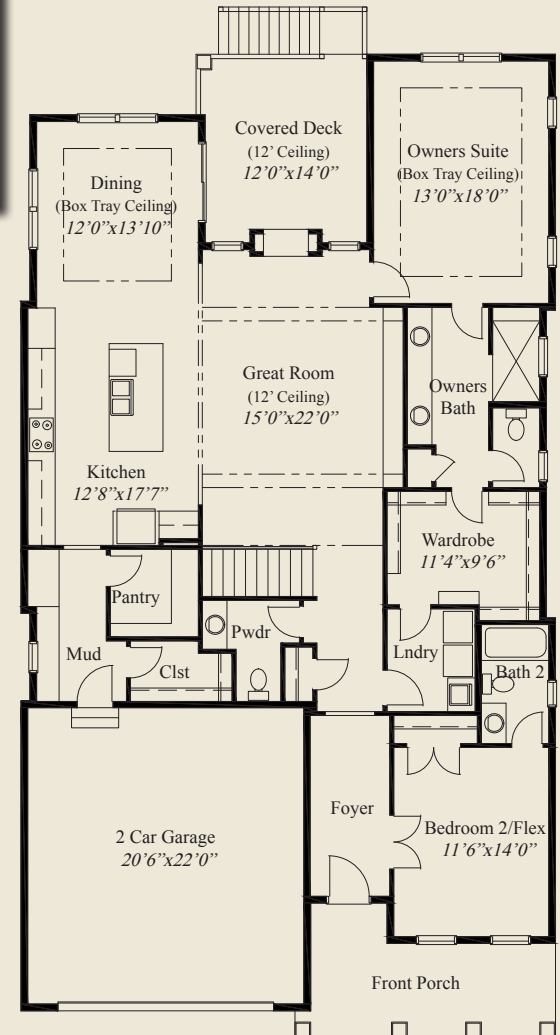
This custom patio home features a 12' beamed ceiling great room w/ see-thru fireplace, and 10' ceilings and 8' doors on the first floor. The owners suite has a box tray ceiling, large shower w/seat, and a spacious wardrobe w/laundry access. The kitchen includes a walk-in pantry. A guest bedroom/flex room w/private bath, a covered deck w/12' ceiling, large mud room w/bench, and a finished LL with daylight windows, family room, and 3rd bedroom w/ full bath, complete this beautiful home.

© Romanelli & Hughes Building Co.

All home plans present on this brochure are protected by copyright. Reproduction either in whole or in part without written permission is strictly prohibited. All renderings and floor plans are artists' conceptions and are not intended to be an actual depiction of the home or its surroundings.



LOWER LEVEL 912 SQ.FT.



FIRST FLOOR 1,972 SQ.FT.

