



Plan Information

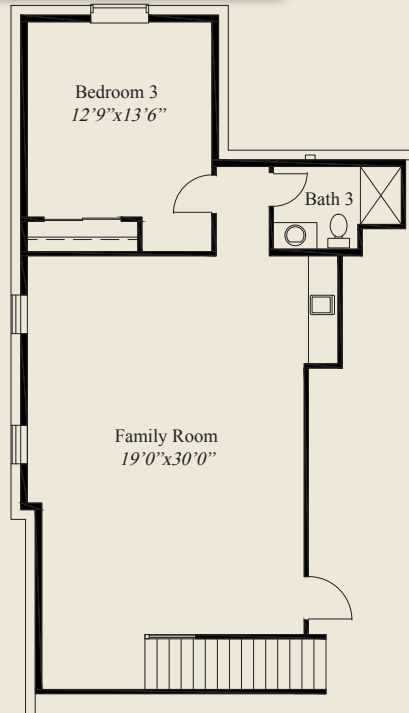
- 2,911 SqFt
- 3 Bedrooms
- 3 1/2 Baths
- 2 Car Garage
- 10' Ceilings, 8' Doors First Floor
- 12' Decorative Ceiling Great Room
- Dining w/Box Tray Ceiling, Open to Great Rm
- Owners Suite w/Box Tray Ceiling, Shower
- Large Wardrobe w/Door to Laundry
- Spacious Kitchen w/Large Walk-in Pantry
- Guest Bedroom w/Private Bath
- Library w/Glass French Doors & Opt. Built-ins
- Large Mud Room w/Bench
- Covered Rear Deck
- Finished LL w/Daylight Windows

Home Information

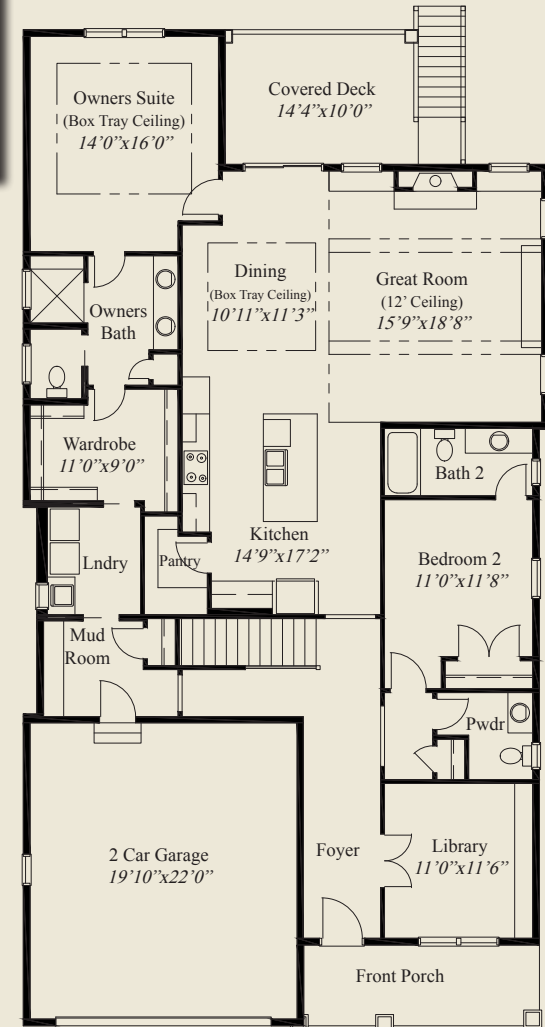
This custom patio home features a 12' decorative ceiling great room and 10' ceilings and 8' doors on the first floor. The owners suite has a box tray ceiling, large shower, and a spacious wardrobe w/laundry access. The large kitchen includes a walk-in pantry. A library w/french glass doors, guest bedroom w/private bath, a covered rear deck, large mud room w/bench, and a finished lower level with daylight windows, family room, and 3rd bedroom w/full bath, complete this beautiful home.

© Romanelli & Hughes Building Co.

All home plans present on this brochure are protected by copyright. Reproduction either in whole or in part without written permission is strictly prohibited. All renderings and floor plans are artists' conceptions and are not intended to be an actual depiction of the home or its surroundings.



LOWER LEVEL 876 SQ.FT.



FIRST FLOOR 2,035 SQ.FT.

