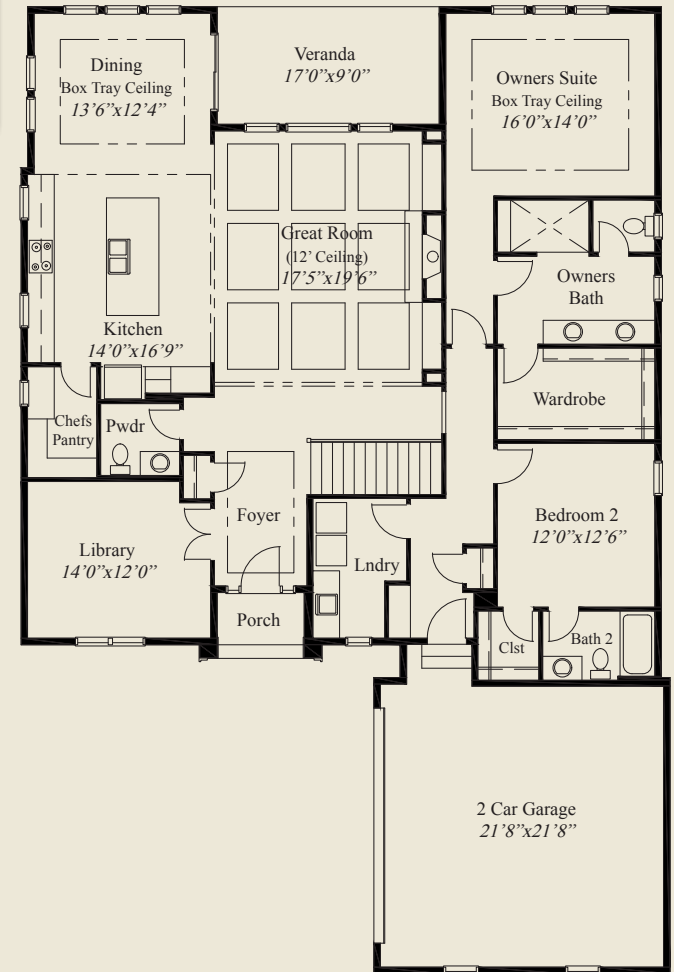




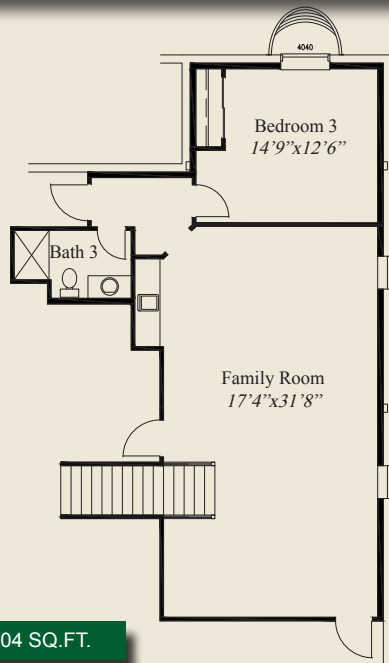
Plan Information

- 3,156 SqFt
- 3 Bedrooms
- 3 1/2 Baths
- 2 Car Garage
- 10' Ceilings, 8' Doors on First Floor
- Great Room w/12' Beamed Ceiling
- 11' Ceiling in Kitchen & Library
- Large Kitchen w/Chefs Pantry
- Box Tray Ceilings in Foyer & Owners Suite
- Owners Suite w/Huge Shower & Wardrobe
- Large Laundry w/Extra Storage
- Library w/Glass French Doors
- Covered Veranda
- First Floor Guest Suite w/Private Bath
- Finished LL w/Family Room, Bedroom, Bath

This custom home features open entertaining and living and a 12' beamed ceiling in the great room, and 11' ceilings in the kitchen & library. 10' ceilings and 8' doors are throughout the rest of the first floor. The formal foyer has glass french doors to the library. Box tray ceilings adorn the foyer, dining and spacious owners suite, which features a huge shower and wardrobe. The kitchen includes a spacious chefs pantry. A large laundry w/extra storage space, a covered veranda, and a finished lower level with huge family room, guest bedroom, and full bath, complete this beautiful home.



FIRST FLOOR 2,252 SQ.FT.



LOWER LEVEL 904 SQ.FT.



© Romanelli & Hughes Building Co.
 All home plans present on this brochure are protected by copyright. Reproduction either in whole or in part without written permission is strictly prohibited. All renderings and floor plans are artists' conceptions and are not intended to be an actual depiction of the home or its surroundings.