

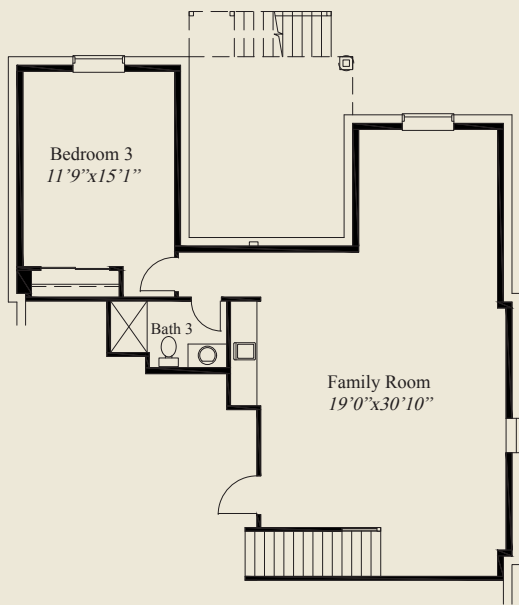


- Plan Information**
- 2,884 SqFt
 - 3 Bedrooms
 - 3 1/2 Baths
 - 2 Car Garage
 - 10' Ceilings, 8' Doors First Floor
 - 12' Decorative Ceiling Great Room
 - Box Tray Ceilings in Dining & Owners Suite
 - Owners Suite w/ Large Shower w/ Seat
 - Laundry w/ Access to Wardrobe
 - Spacious Kitchen w/ Large Walk-in Pantry
 - Flex Room Library/Bedroom w/ Private Bath
 - Large Mud Room
 - Covered Rear Deck w/ 12' Ceiling
 - Finished LL w/ Family Room, Bedroom, Bath

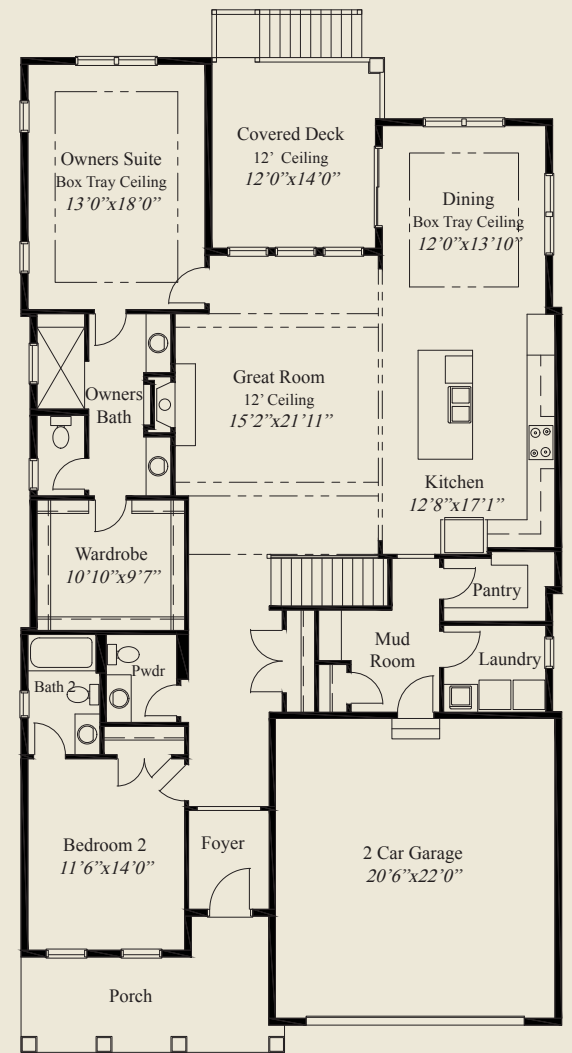
Home Information

This custom patio home features a 12' ceiling great room and 10' ceilings and 8' doors on the first floor. The owners suite has a box tray ceiling, a huge shower w/ seat and a spacious wardrobe w/ laundry access. A flex/bedroom/library w/ french glass doors and private bath, a covered rear deck, large mud room, and a finished lower level with family room and bedroom w/ full bath, complete this beautiful home.

© Romanelli & Hughes Building Co.
All home plans present on this brochure are protected by copyright. Reproduction either in whole or in part without written permission is strictly prohibited. All renderings and floor plans are artists' conceptions and are not intended to be an actual depiction of the home or its surroundings.



LOWER LEVEL 912 SQ.FT.



FIRST FLOOR 1,972 SQ.FT.

