



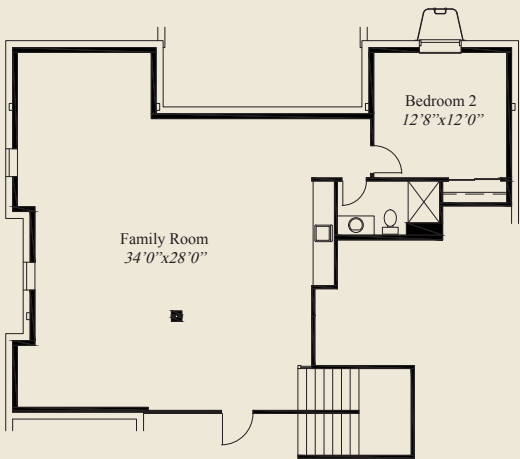
Vasari A



Vasari B

Plan Information

- 2,315 SqFt
- 1 Bedrooms
- 2 1/2 Baths
- 3 Car Split Garage
- 10' Ceilings, 8' Doors on First Floor
- 12' Detailed Beamed Ceiling in Great Room
- Foyer w/ Box Tray Ceiling
- Large Kitchen w/ Planning Station, Chefs Pantry
- Dining w/ Box Tray Ceiling
- Owners Suite w/ Box Tray Ceiling
- Spacious Wardrobe w/ Optional Laundry Access
- Flex Room with Private Bathroom
- Covered Veranda w/ 4 Panel Glass Door
- Switchback Easy Step Stairs to LL
- Full Basement for Optional Finishing



OPTIONAL FINISHED LOWER LEVEL 1186 SQ.FT.



FIRST FLOOR 2,315 SQ.FT.



© Romanelli & Hughes Building Co.  
All home plans present on this brochure are protected by copyright. Reproduction either in whole or in part without written permission is strictly prohibited. All renderings and floor plans are artists' conceptions and are not intended to be an actual depiction of the home or its surroundings.