



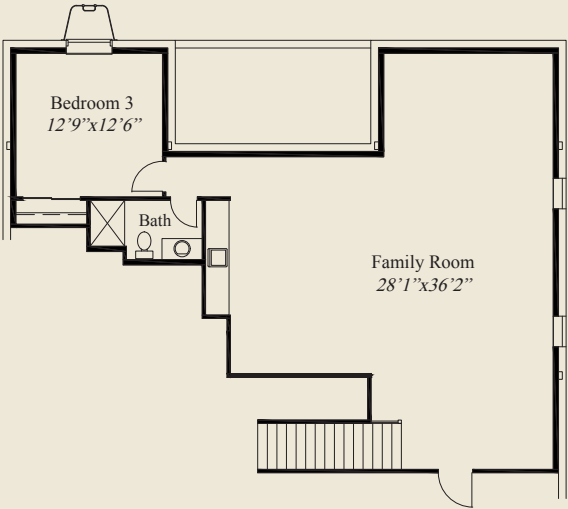
Romano A



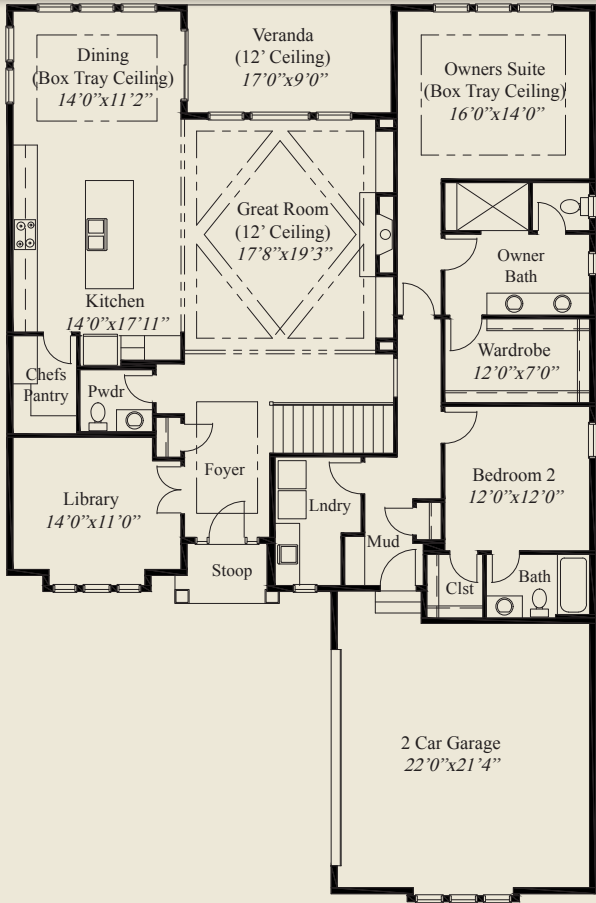
Romano B

Plan Information

- 2,244 SqFt
- 2 Bedrooms
- 2 1/2 Baths
- 2 Car Garage
- 10' Ceilings, 8' Doors on First Floor
- 12' Detailed Ceiling in Great Room
- Foyer w/Box Tray Ceiling
- Large Kitchen w/Chefs Pantry
- Dining w/Box Tray Ceiling
- Owners Suite w/Box Tray Ceiling
- Spacious Wardrobe
- Guest Suite with Private Bathroom
- Covered Veranda w/12' Ceiling
- Full Basement for Optional Finishing



OPTIONAL FINISHED LOWER LEVEL 1127 SQ.FT.



FIRST FLOOR 2,244 SQ.FT.



© Romanelli & Hughes Building Co.
All home plans present on this brochure are protected by copyright. Reproduction either in whole or in part without written permission is strictly prohibited. All renderings and floor plans are artists' conceptions and are not intended to be an actual depiction of the home or its surroundings.