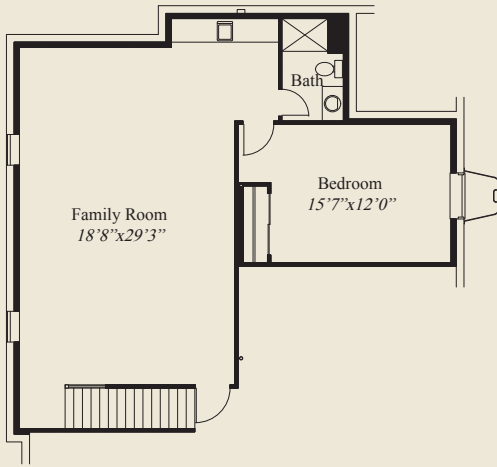


Hemlock A

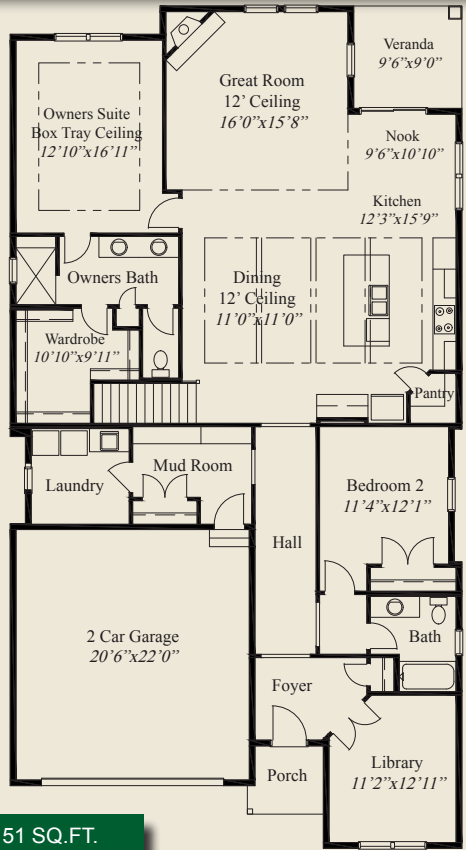


Hemlock B

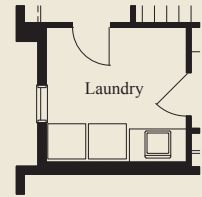
- Plan Information**
- 2,151 SqFt
 - 2 Bedrooms
 - 2 Baths
 - 2 Car Garage
 - 10' Ceilings, 8' Doors on First Floor
 - Decorative Beamed Ceiling in Dining/Kitchen
 - Large Mud Room w/ Bench Area
 - Library w/ Glass French Doors
 - Large Kitchen w/ Walk-in Pantry & Nook
 - Owners Suite w/ Box Tray Ceiling
 - Owner Bath w/ Large Seated Shower
 - Optional Door from Wardrobe to Laundry
 - Covered Veranda
 - Full Basement for Optional Finishing



OPTIONAL LOWER LEVEL 953 SQ.FT.



FIRST FLOOR 2,151 SQ.FT.



Optional Door to Wardrobe



© Romanelli & Hughes Building Co.
All home plans present on this brochure are protected by copyright. Reproduction either in whole or in part without written permission is strictly prohibited. All renderings and floor plans are artists' conceptions and are not intended to be an actual depiction of the home or its surroundings.