

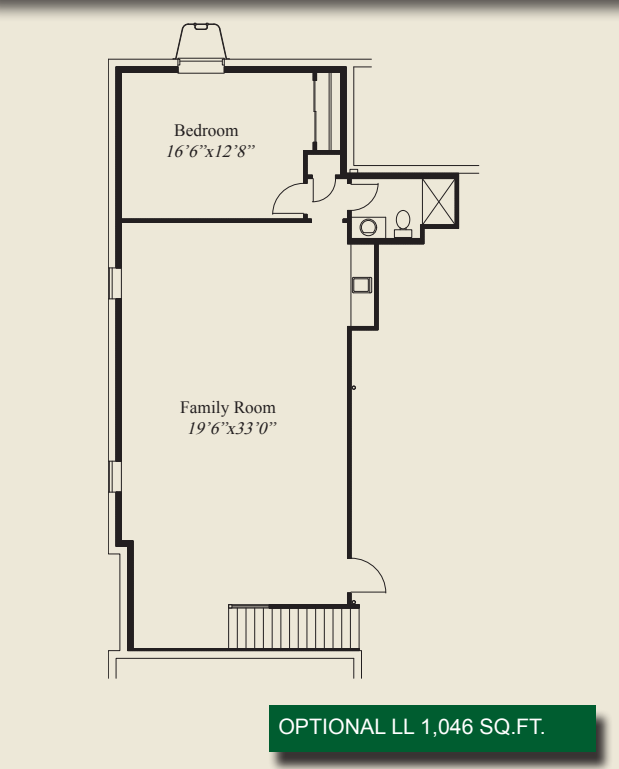


Cedar A

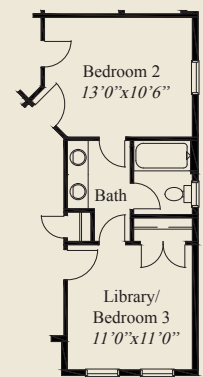
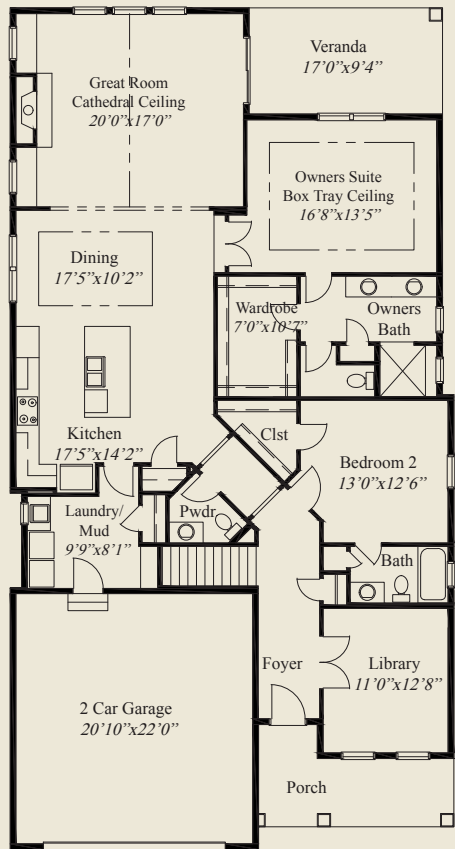


Cedar B

- Plan Information**
- 2,046 SqFt
  - 2 Bedrooms
  - 2 1/2 Baths
  - 2 Car Garage
  - 10' Ceilings, 8' Doors on First Floor
  - Great Room w/ Cathedral Ceiling
  - Spacious Kitchen & Dining
  - Large Mud Room w/ Bench
  - Library w/ French Doors
  - Owners Suite w/ Box Tray Ceiling & Huge Shower w/ Seat
  - Covered Veranda
  - Large Mud/Laundry Room
  - Covered Veranda
  - Optional Jack & Jill Bath
  - Full Basement for Optional Finishing



OPTIONAL LL 1,046 SQ.FT.



Optional Jack & Jill Bath

FIRST FLOOR 2,046 SQ.FT.



© Romanelli & Hughes Building Co.  
All home plans present on this brochure are protected by copyright. Reproduction either in whole or in part without written permission is strictly prohibited. All renderings and floor plans are artists' conceptions and are not intended to be an actual depiction of the home or its surroundings.