



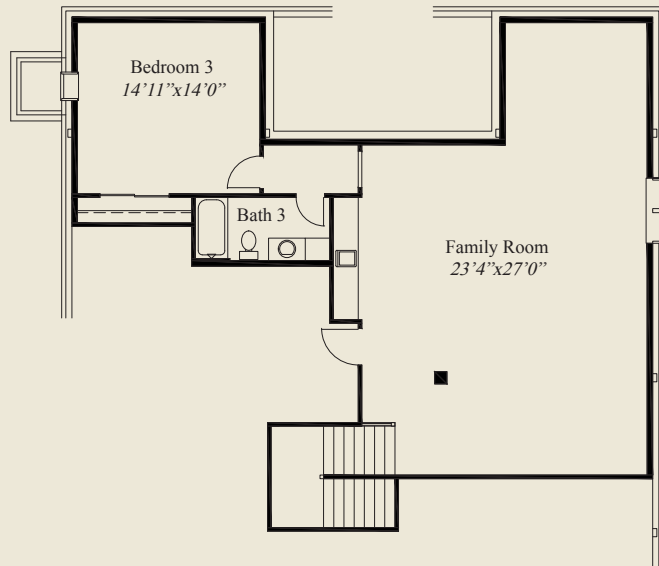
**Plan Information**

- 3,555 SqFt
- 3 Bedrooms
- 3 Baths
- 2 Car Garage (Oversize)
- Mud Room w/Bench & Closet
- 11' Ceilings, 8' Doors on First Floor
- 12' Box Beam Ceiling Great Room
- Library w/ Built-ins
- Large Kitchen w/Spacious Chefs Pantry
- Box Tray Ceilings in Foyer, Dining & Owners Suite
- Guest Suite w/Private Bath
- Owners Suite Wardrobe w/Access to Laundry
- Covered Veranda w/12' Ceiling
- Finished LL w/Family Rm, Bedroom, & Full Bath

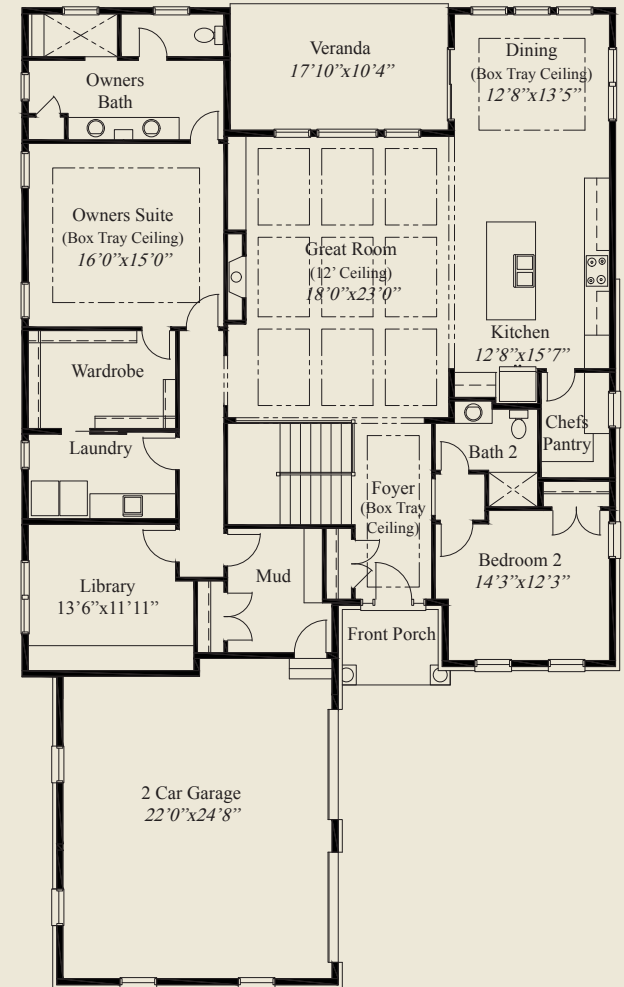


**Home Information**

This custom ranch features open entertaining and living with 11' ceilings and 8' doors on the first floor. A 12' box beamed ceiling is in the great room and tray ceilings adorn the foyer, dining and owners suite. The private library includes built-ins. The spacious owners suite features a huge wardrobe w/laundry access, and deluxe bath w/oversize shower. The kitchen w/chefs pantry, a guest suite w/private bath, a mud room w/bench & closet, and the finished lower level w/huge family room, and third bedroom and bath, complete this beautiful home.



LOWER LEVEL 1,161 SQ.FT.



FIRST FLOOR 2,394 SQ.FT.

© Romanelli & Hughes Building Co.  
All home plans present on this brochure are protected by copyright. Reproduction either in whole or in part without written permission is strictly prohibited. All renderings and floor plans are artists' conceptions and are not intended to be an actual depiction of the home or its surroundings.

