

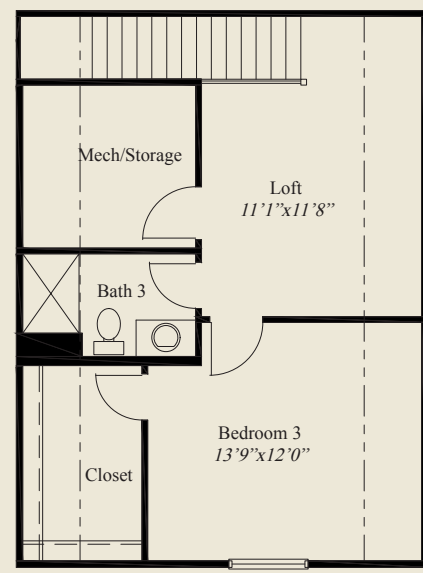


- ### Plan Information
- 2,120 SqFt
  - 3 Bedrooms
  - 3 Baths
  - 2 Car Garage
  - 9' Ceilings, 1st & 2nd Floors
  - 11' Detailed Ceiling Great Room
  - Kitchen w/Walk-in Pantry
  - 1st Flr Guest Bedroom/Library
  - Owner Suite w/Tray Ceiling & Large Wardrobe
  - Covered Veranda
  - Mud Room w/Closet
  - 2nd Flr Loft, 3rd Bedroom, Full Bath, Walk-in Closet, Storage

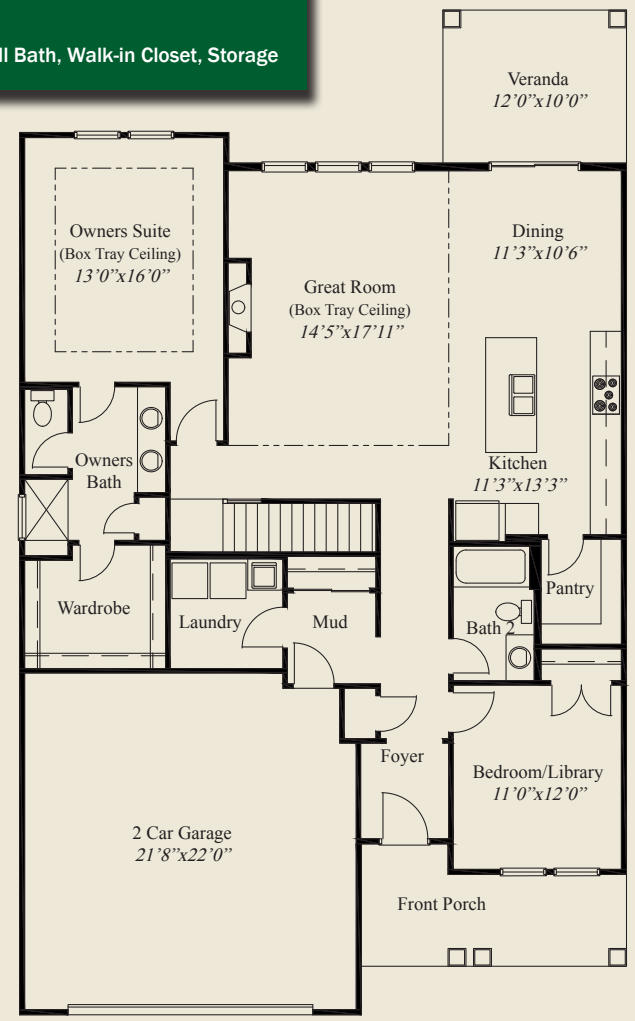
### Home Information

This custom home features open entertaining and living, 9' ceilings on the first & second floors, and a 11' ceiling spacious great room. The huge kitchen has a corner walk-in pantry and ample dining space. The owners suite, w/box tray ceiling, also has an oversized shower & huge wardrobe. A first floor guest suite, covered veranda, and a upper level loft, w/3rd bedroom, large walk-in closet, extra storage, and full bath, complete this beautiful home.

© Romanelli & Hughes Building Co. All home plans present on this brochure are protected by copyright. Reproduction either in whole or in part without written permission is strictly prohibited. All renderings and floor plans are artists' conceptions and are not intended to be an actual depiction of the home or its surroundings.



SECOND FLOOR 541 SQ.FT.



FIRST FLOOR 1,579 SQ.FT.

