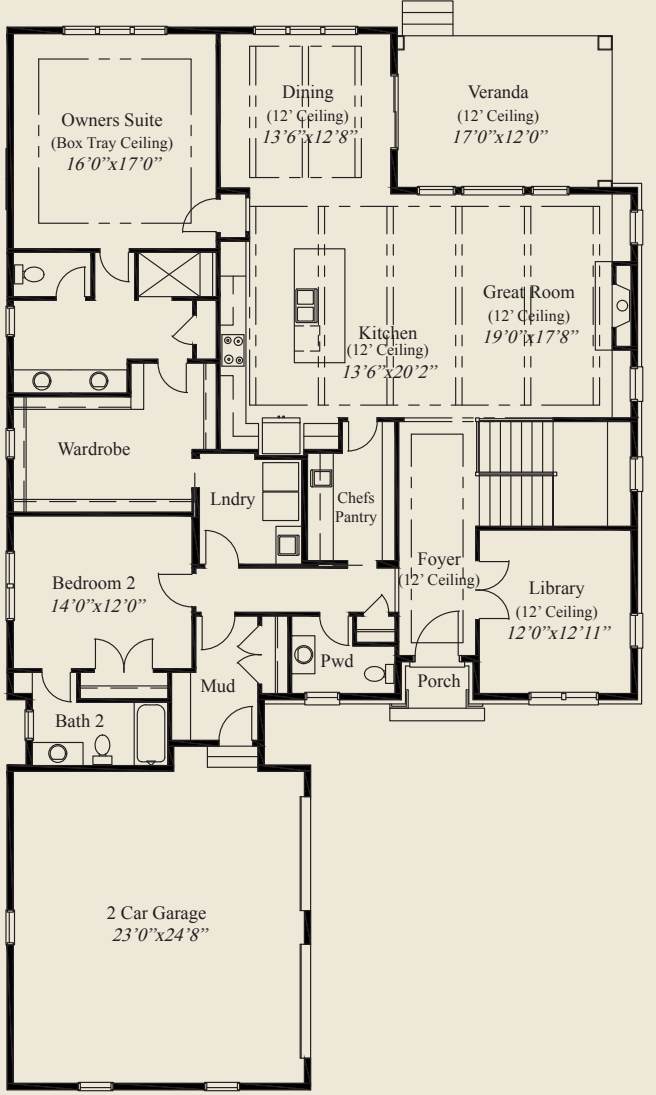


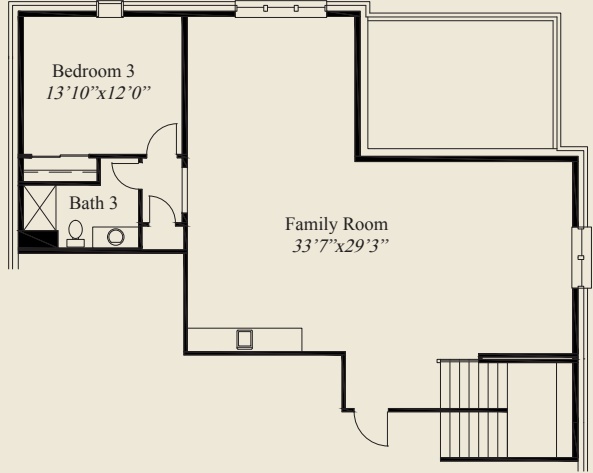


- Plan Information**
- 3,631 SqFt
 - 3 Bedrooms
 - 3 1/2 Baths
 - 2 Car Garage (Oversize)
 - Mud Room w/Bench & Closet
 - 10' Ceilings, 8' Doors on First Floor
 - 12' Beamed Ceiling in Great Rm, Kitchen, Dining
 - Library w/12' Ceiling & Glass French Doors
 - Large Kitchen w/Chefs Pantry
 - Box Tray Ceilings in Foyer & Owners Suite
 - Guest Suite w/Private Bath
 - Spacious Owners Suite w/Oversize Shower
 - Huge Wardrobe w/Laundry Access
 - Covered Veranda w/12' Ceiling
 - Finished LL w/Family Rm, 3rd Bedroom, Bath

This custom ranch features open entertaining and living with 10' ceilings and 8' doors on the first floor. A 12' beamed ceiling is in the great room, kitchen & dining room. Box tray ceilings adorn the foyer and owners suite and there are 12' ceilings in the library and veranda. The library has double french glass doors. The spacious owners suite features a huge wardrobe with a connected laundry. The large kitchen w/chefs pantry, a guest suite w/private bathroom, a covered veranda, a mud room w/bench, and the finished lower level w/family room, third bedroom and bath, complete this beautiful home.



FIRST FLOOR 2,484 SQ.FT.



FINISHED LOWER LEVEL 1,147 SQ.FT.

© Romanelli & Hughes Building Co.
 All home plans present on this brochure are protected by copyright. Reproduction either in whole or in part without written permission is strictly prohibited. All renderings and floor plans are artists' conceptions and are not intended to be an actual depiction of the home or its surroundings.

