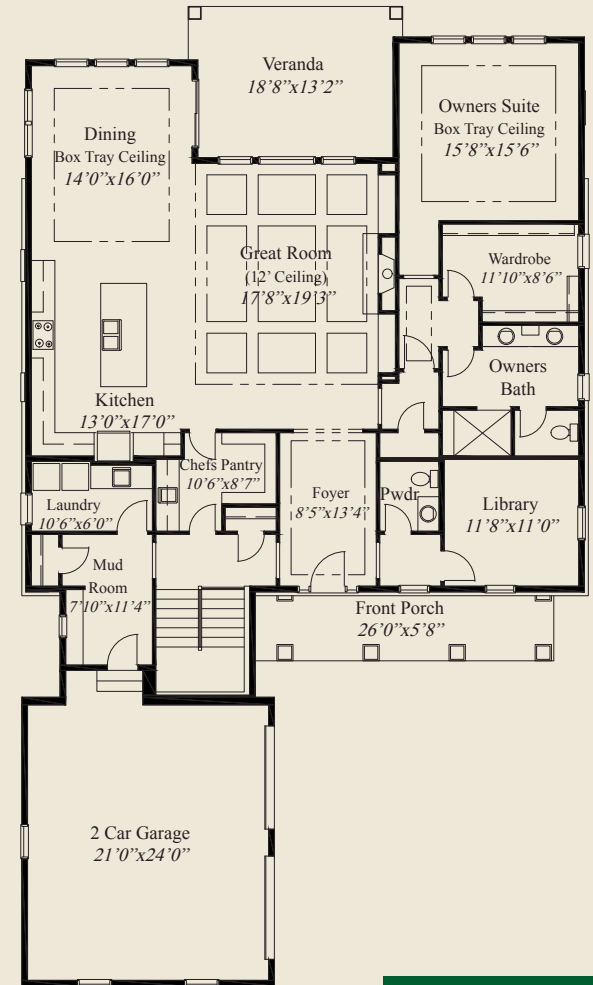




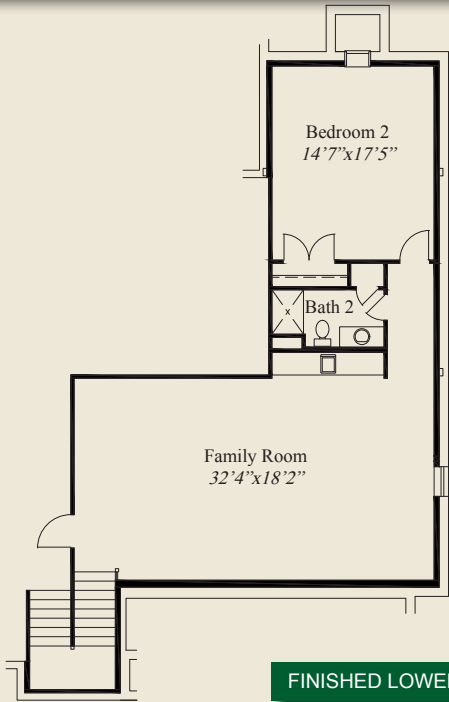
Plan Information

- 3,358 SqFt
- 2 Bedroom
- 2 1/2 Baths
- 2 Car Garage
- 10' Ceilings, 8' Doors on First Floor
- Foyer w/Box Tray Ceiling
- 12' Great Room w/Beamed Ceiling
- Large Kitchen w/Huge Chefs Pantry
- Box Tray Ceilings in Owners Suite & Dining
- Large Laundry w/Storage
- Owners Suite w/Oversize Shower & Wardrobe
- Covered Veranda
- Large Mud Room w/Bench & Closet
- Library
- Switch Back Stairs
- Finished LL Family Room, Bedroom, Bath

This custom home features open entertaining and living and a 12' beamed ceiling in the great room. 10' ceilings and 8' doors are throughout the first floor. Box tray ceilings adorn the foyer, dining and spacious owners suite complete with an oversized shower and huge wardrobe. The large kitchen includes a spacious chefs pantry. A large laundry w/extra storage space, a covered veranda, and switchback stairs to the finished lower level complete with family room, bedroom, and bath, add to the appeal of this beautiful home.



FIRST FLOOR 2,290 SQ.FT.



FINISHED LOWER LEVEL 1,068 SQ.FT.



© Romanelli & Hughes Building Co.
 All home plans present on this brochure are protected by copyright. Reproduction either in whole or in part without written permission is strictly prohibited. All renderings and floor plans are artists' conceptions and are not intended to be an actual depiction of the home or its surroundings.