

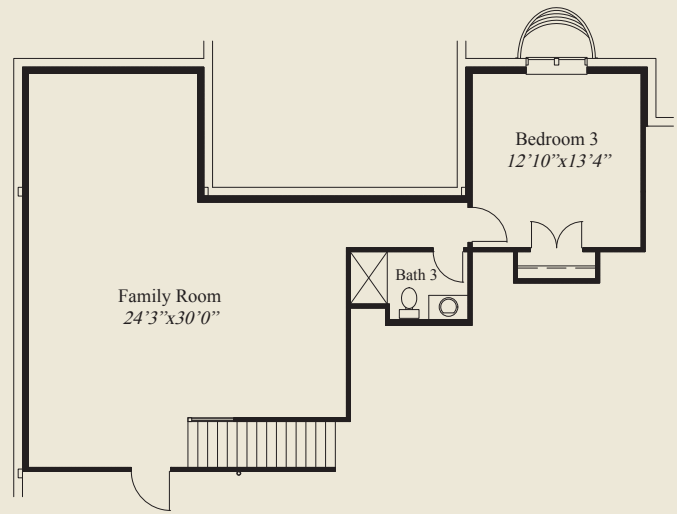


- Plan Information**
- 3,274 SqFt
 - 3 Bedrooms
 - 3 1/2 Baths
 - 3 Car Garage (Oversize)
 - 10' Ceilings, 8' Doors First Floor
 - 12' Beam Ceiling in Great Room
 - Box Tray Ceilings in Foyer, Dining, & Owners
 - Library w/Double French Glass Doors
 - Large Kitchen w/Chefs Pantry
 - Owners Suite w/Large Wardrobe & Shower
 - Large Mud/Laundry Room
 - First Floor Guest Suite w/Private Bathroom
 - Covered Veranda
 - LL w/ Family Room & 3rd Bedroom & Bath

Home Information

This custom home features a 12' beam ceiling in the great room and 10' ceilings and 8' doors on the first floor. Box tray ceilings adorn the foyer, dining, and owners suite. The owners suite includes a large wardrobe and shower. The guest suite has a private bath. A library w/french glass doors, large kitchen w/chefs pantry, covered veranda, large mud/laundry room, and finished lower level with family room and third bedroom and bath, complete this beautiful home.

© Romanelli & Hughes Building Co.
All home plans present on this brochure are protected by copyright. Reproduction either in whole or in part without written permission is strictly prohibited. All renderings and floor plans are artists' conceptions and are not intended to be an actual depiction of the home or its surroundings.



LOWER LEVEL 915 SQ.FT.



FIRST FLOOR 2,359 SQ.FT.

