



Plan Information

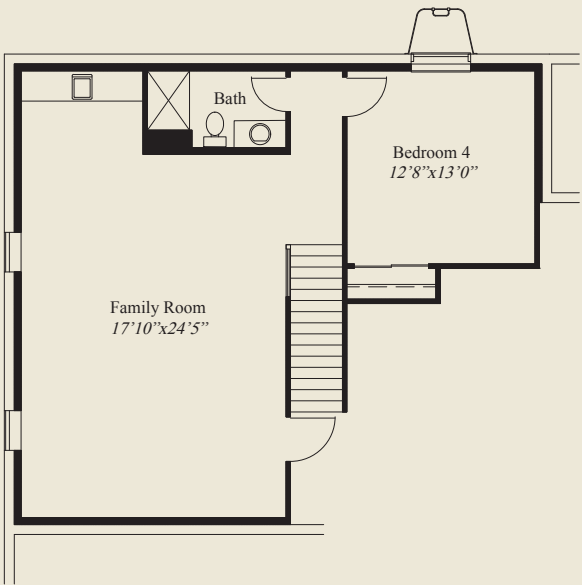
- 2,241 SqFt
- 3 Bedrooms
- 2 1/2 Baths
- 3 Car Garage
- 10' Ceilings, 8' Doors First Floor
- Box Tray Ceiling Great Room, Owners Suite
- Library w/Glass French Doors
- Owners Suite w/Large Wardrobe & Shower
- Large Mud Room w/Bench & Adjacent Lndry
- Large Kitchen w/Walk-in Pantry
- Covered Veranda
- Optional Finished LL w/8' 8" Ceilings, 6' 8" Doors, Family Room, 4th Bedroom & Bath



Elevation - A



Elevation - B



OPTIONAL FINISHED LOWER LEVEL 817 SQ.FT.



FIRST FLOOR 2,241 SQ.FT.



© Romanelli & Hughes Building Co.  
All home plans present on this brochure are protected by copyright.  
Reproduction either in whole or in part without written permission  
is strictly prohibited. All renderings and floor plans are artists'  
conceptions and are not intended to be an actual depiction of the  
home or its surroundings.