



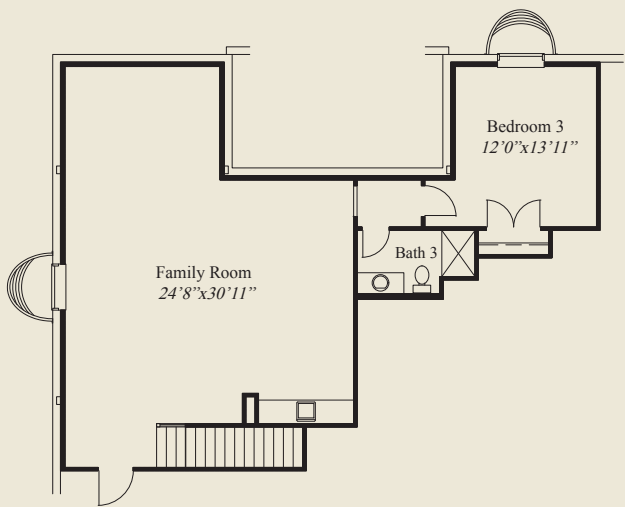
Plan Information

- 3,441 SqFt
- 3 Bedrooms
- 3 1/2 Baths
- 2 + 1 Car Garage (Oversize)
- 1st Floor 10' Ceilings, 8' Doors
- 12' Beamed Ceiling in Great Room
- 1st Floor Guest Suite w/Private Bath
- Library w/French Glass Doors
- Large Kitchen w/Walk-in Pantry
- Mud Room w/Bench & Closet
- Owners Suite w/Large Wardrobe & Tray Ceiling
- Owners Bath w/Free Standing Tub, Oversize Shower
- Covered Veranda w/13' Ceiling
- Large Front Porch
- LL w/ Family Room, 3rd Bedroom & Bath

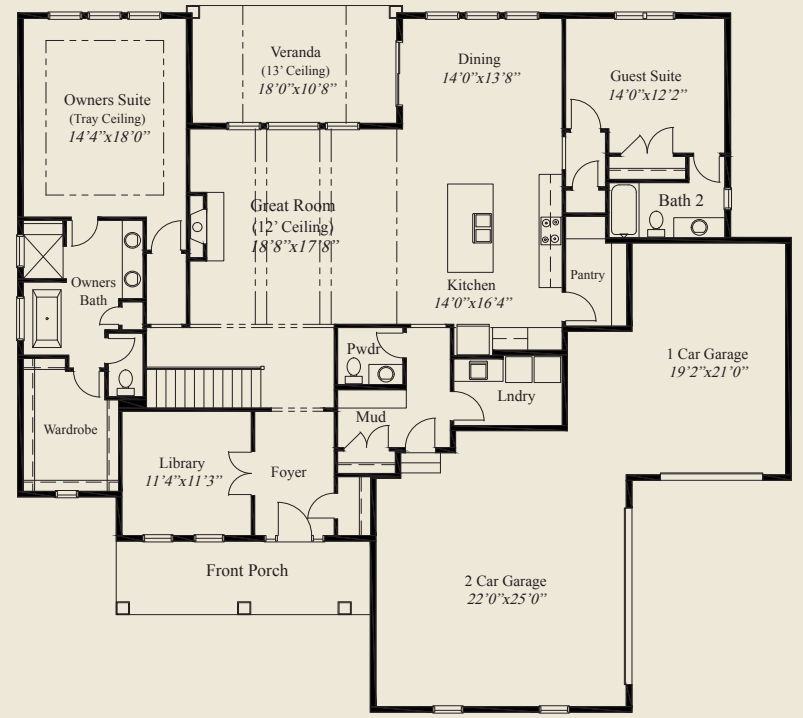
Home Information

This custom home features a 12' beamed ceiling in the great room and 10' ceilings and 8' doors on the first floor. Tray ceilings adorn the owners suite. The owners suite includes a large wardrobe, free standing tub and oversized shower. A library w/french glass doors, large kitchen w/walk-in pantry, covered veranda w/13' ceiling, a 1st floor guest suite w/private bath and a finished lower level with family room, third bedroom, and full bath, all add to the appeal of this beautiful home.

© Romanelli & Hughes Building Co. All home plans present on this brochure are protected by copyright. Reproduction either in whole or in part without written permission is strictly prohibited. All renderings and floor plans are artists' conceptions and are not intended to be an actual depiction of the home or its surroundings.



LOWER LEVEL 1,026 SQ.FT.



FIRST FLOOR 2,291 SQ.FT.

