



### Plan Information

- 3,641 SqFt
- 3 Bedrooms
- 3 1/2 Baths
- 2 + 1 Car Garage (Oversize)
- 1st Floor 10' Ceilings, 8' Doors
- 12' Detailed Ceiling in Great Room
- 1st Floor Guest Bedroom w/ Private Bath
- Tray Ceilings in Dining, Foyer and Owners Suite
- Library w/French Glass Doors
- Large Kitchen w/Chefs Pantry
- Owners Suite w/Large Wardrobe & Shower
- Large Laundry Convenient to Owners Suite
- Switchback Stairs to LL
- LL w/ Family Room & 3rd Bedroom & Bath

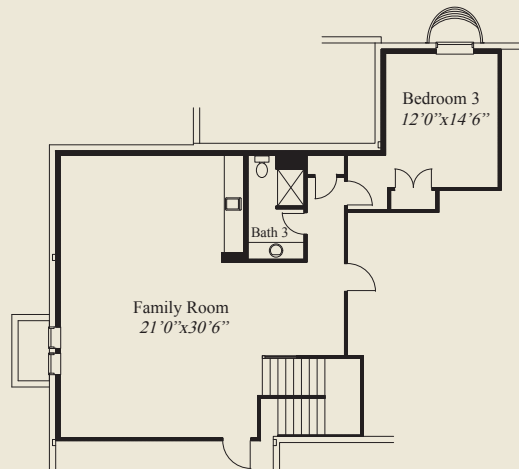


### Home Information

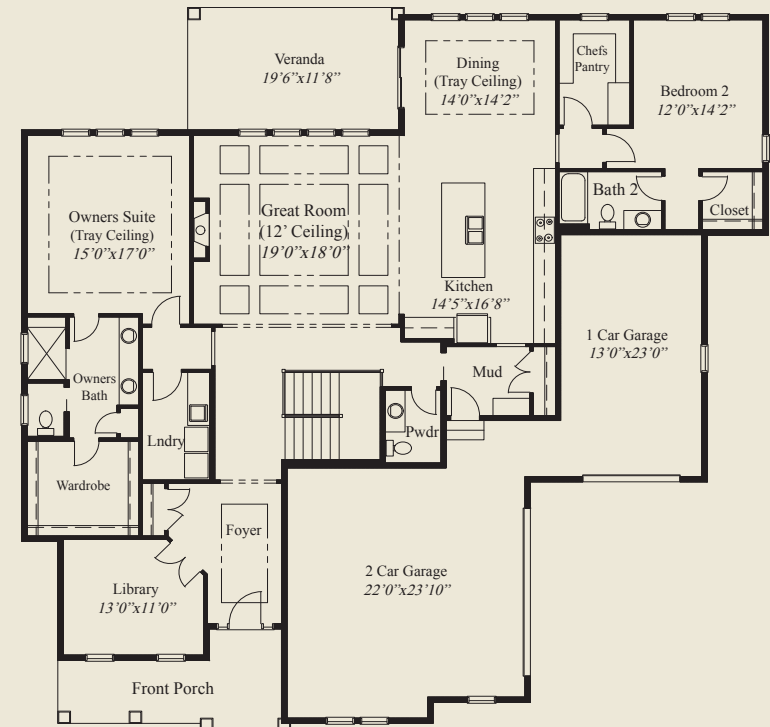
This custom home features a 12' box beam ceiling in the great room and 10' ceilings and 8' doors on the first floor. Tray ceilings adorn the dining area, foyer and owners suite. The owners suite includes a large wardrobe, oversized shower. A library w/french glass doors, large kitchen w/chefs pantry, covered veranda, a 1st floor guest bedroom w/ private bath and switch back stairs to the finished lower level with family room and third bedroom, all add to the appeal of this beautiful home.

© Romanelli & Hughes Building Co.

All home plans present on this brochure are protected by copyright. Reproduction either in whole or in part without written permission is strictly prohibited. All renderings and floor plans are artists' conceptions and are not intended to be an actual depiction of the home or its surroundings.



LOWER LEVEL 1,130 SQ.FT.



FIRST FLOOR 2,511 SQ.FT.

