



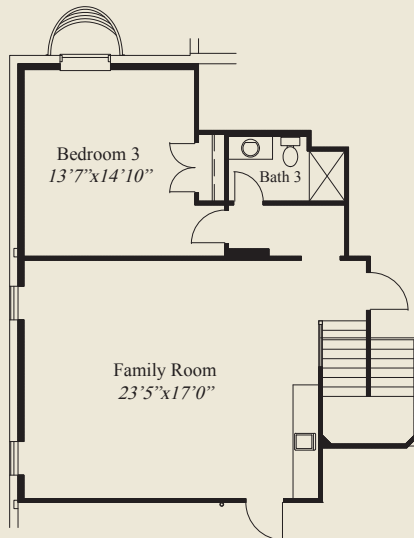
Plan Information

- 3,151 SqFt
- 3 Bedrooms
- 3 1/2 Baths
- 3 Car Garage (Oversized 2 +1)
- 10' Ceilings, 8' Doors First Floor
- 12' Box Beam Ceiling in Great Room
- Box Tray Ceiling in Owners Suite
- Large Porch & Foyer
- Library w/Double French Glass Doors
- Large Kitchen w/Chefs Pantry
- Owners Suite w/Large Wardrobe & Shower
- Switchback Stairs to LL
- First Floor Guest Suite w/Private Bathroom
- Covered Veranda
- LL w/ Family Room & 3rd Bedroom & Bath

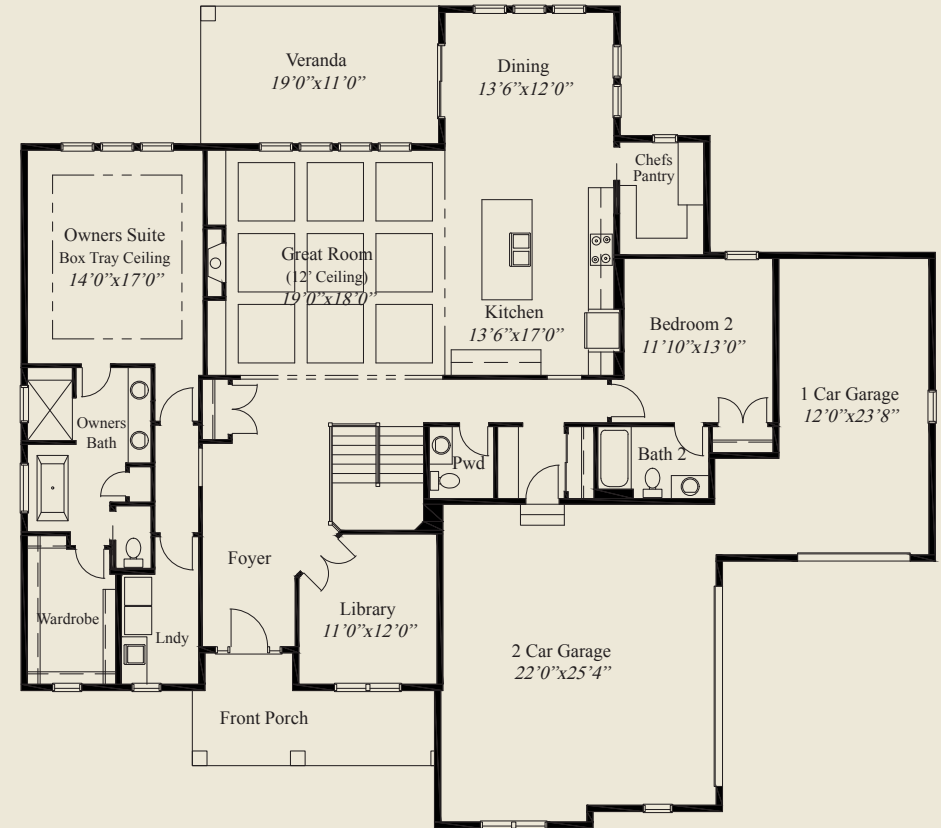
Home Information

This custom home features a large porch, spacious foyer, and 12' box beam ceiling in the great room and 10' ceilings and 8' doors on the first floor. The owners suite includes a box tray ceiling and large wardrobe and shower. The first floor guest suite has a private bath. A library w/french glass doors, large kitchen w/chefs pantry, covered veranda, and switchback stairs to a finished lower level, with family room and third bedroom and bath, complete this beautiful home.

© Romanelli & Hughes Building Co.
All home plans present on this brochure are protected by copyright. Reproduction either in whole or in part without written permission is strictly prohibited. All renderings and floor plans are artists' conceptions and are not intended to be an actual depiction of the home or its surroundings.



LOWER LEVEL 832 SQ.FT.



FIRST FLOOR 2,319 SQ.FT.

