



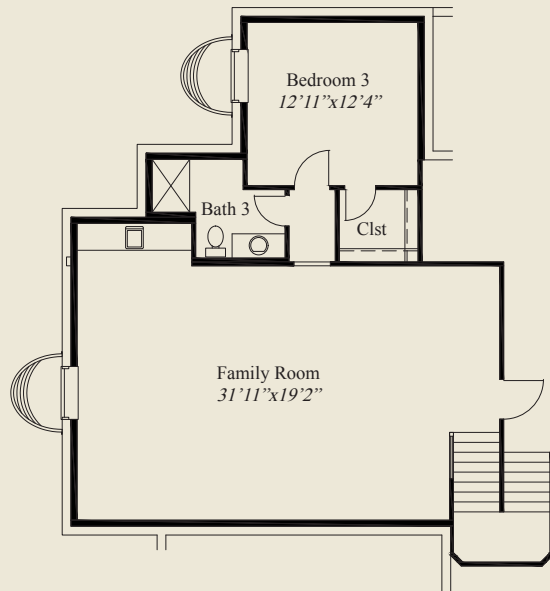
Plan Information

- 3,302 SqFt
- 3 Bedrooms
- 3 1/2 Baths
- 3 Car Garage
- 10' Ceilings, 8' Doors First Floor
- 12' Box Beam Ceiling in Great Room
- Box Tray Ceilings in Foyer, Dining, & Owners
- Library w/Glass French Doors
- Large Kitchen w/Chefs Pantry & Desk Nook
- Owners Suite w/Large Wardrobe & Shower
- Laundry Room w/Access to Wardrobe
- First Floor Guest Suite w/Private Bathroom
- Covered Veranda
- LL w/ Family Room & 3rd Bedroom & Bath

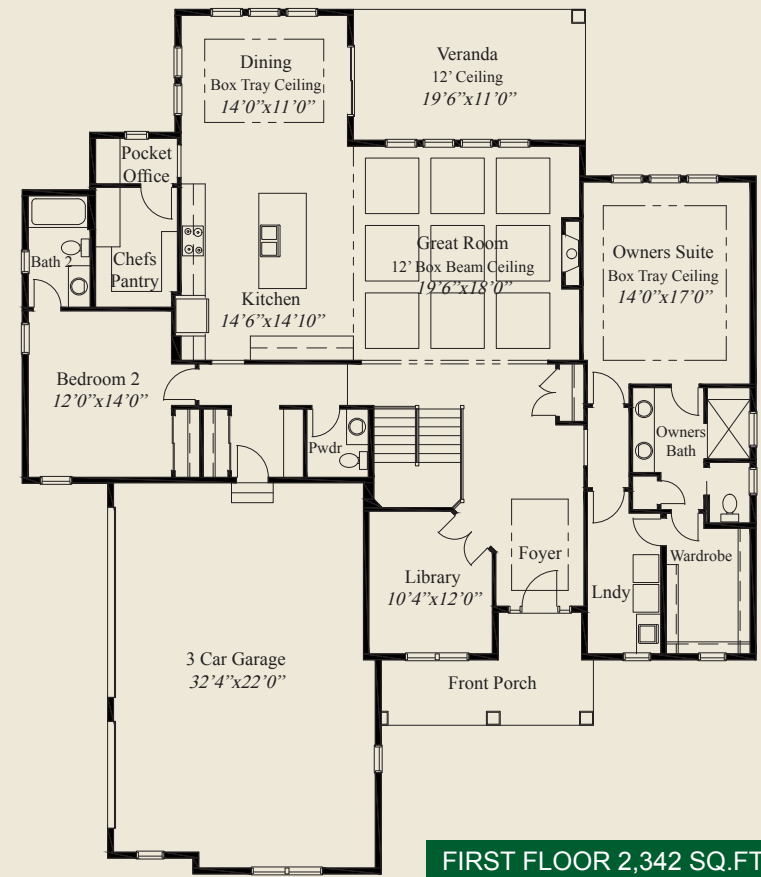
Home Information

This custom home features a 12' box beam ceiling in the great room and 10' ceilings and 8' doors on the first floor. Box tray ceilings adorn the foyer, dining, and owners suite. The owners suite includes a large wardrobe and shower. The guest suite has a private bath. A library w/glass french doors, large kitchen w/chefs pantry & desk nook, covered veranda, laundry room w/wardrobe access, and finished lower level with family room and third bedroom and bath, complete this beautiful home.

© Romanelli & Hughes Building Co. All home plans present on this brochure are protected by copyright. Reproduction either in whole or in part without written permission is strictly prohibited. All renderings and floor plans are artists' conceptions and are not intended to be an actual depiction of the home or its surroundings.



LOWER LEVEL 960 SQ.FT.



FIRST FLOOR 2,342 SQ.FT.

