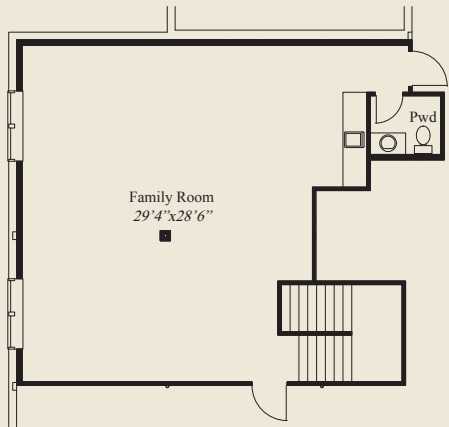




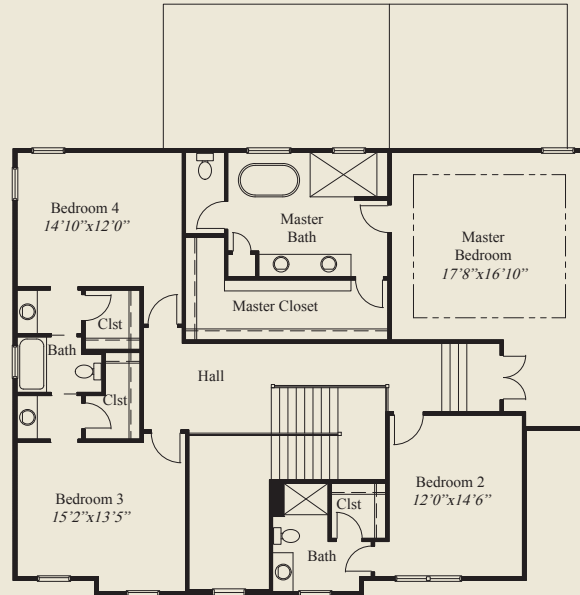
Plan Information

- 4,790 SqFt
- 5 Bedrooms
- 4+ 2 Half Baths
- 3 Car Garage (Oversize)
- Large Front Porch
- Mud Room w/Long Bench, Closet
- First Floor 10' Ceilings, 8' Doors
- 12' Box Beam Ceilings Great Rm/Kitchen/Dining
- Study w/Barn Door
- First Floor Guest Bedroom, Bath
- Huge Kitchen Pantry
- Raised Master Suite w/Tub, Oversized Shower
- All 2nd Floor Bedrooms w/Walk-in Closets
- Finished LL w/ Large Family Room
- Covered Rear Porch

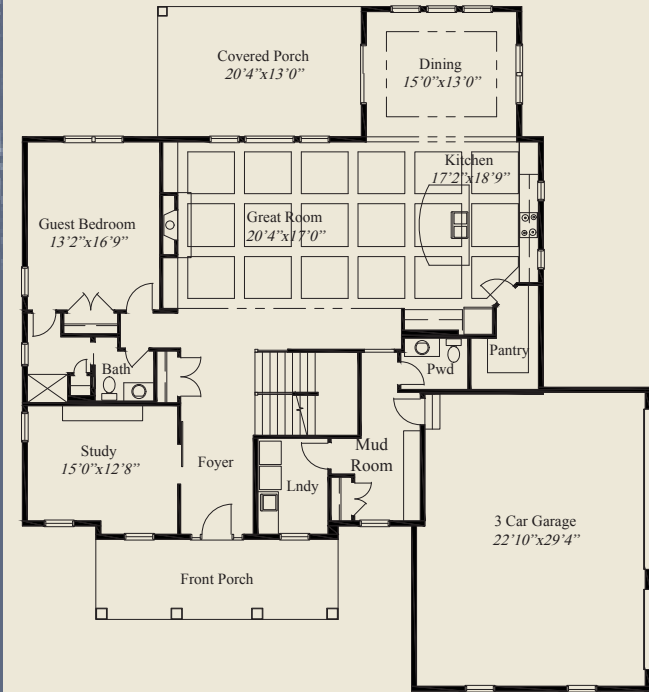
This custom home has a large front porch and open living and entertaining. It features raised decorative ceilings in the great room, kitchen and dining area along with 8' doors. It also offers a mud room with a long bench & closet, a first floor guest bedroom & bath, and a study with a sliding barn door. A finished lower level with a huge family room, raised master suite with tub & oversized shower & closet, second floor bedrooms with walk-in closets, and a covered rear porch, all add to the appeal of this beautiful home.



FINISHED LL 843 SQ.FT.



SECOND FLOOR 1,843 SQ.FT.



FIRST FLOOR 2,104 SQ.FT.



© Romanelli & Hughes Building Co.
 All home plans present on this brochure are protected by copyright.
 Reproduction either in whole or in part without written permission is strictly prohibited.