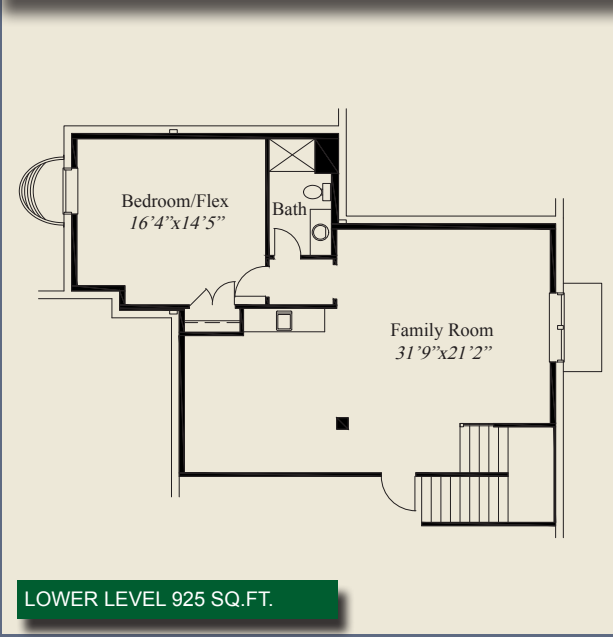


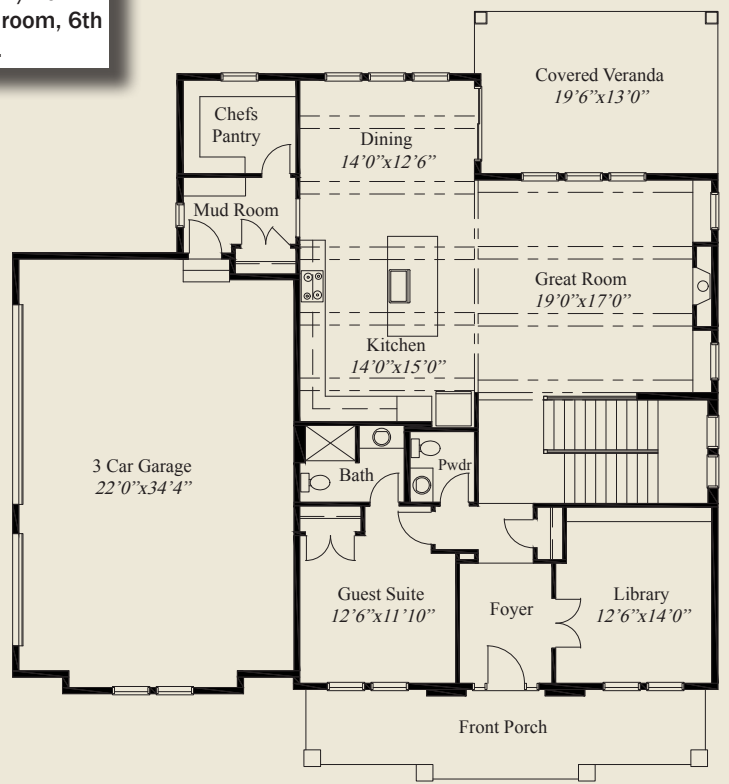


- ### Plan Information
- 4,425 SqFt
  - 6 Bedrooms
  - 5 1/2 Baths
  - 3 Car Garage
  - Large Front Porch
  - 11' First Floor Ceilings w/8' Doors
  - 9' Second Floor Ceilings
  - Detailed Ceilings in Great Rm, Dining & Kitchen
  - Rear Covered Veranda
  - Mud Room w/Bench & Closet w/Adjacent Chefs Pantry
  - Library w/French Doors
  - First Floor Guest Suite w/Private Bath
  - Switchback Stairs w/Windows
  - Huge Owners Suite w/Tray Ceiling
  - Owners Bath w/Free Standing Tub, Oversize Shower
  - Huge Owners Wardrobe, 2nd Flr Laundry
  - All 2nd Flr Bedrooms w/Walk-in Closets
  - Finished LL w/ Family Room, 6th Bed/Flex, Full Bath

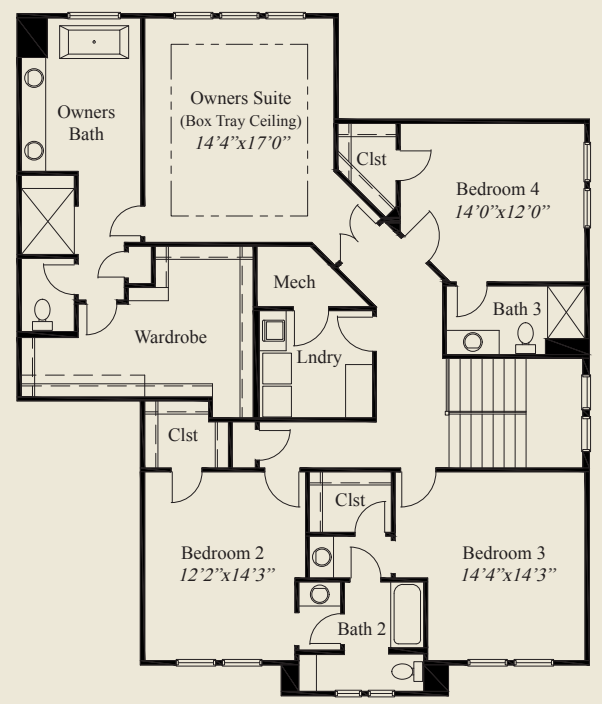
This custom 2 story features a large front porch, 1st floor 11' ceilings and 8' doors, 9' 2nd floor ceilings, and detailed ceilings in the great room, kitchen, and dining. A mud room w/bench & closet, adjacent chefs pantry, library w/french doors, and a covered veranda, complete the 1st floor. Switchback stairs w/windows lead to an owners suite w/oversize shower, free standing tub & huge wardrobe, along w/3 bedrooms w/walk-in closets and a 2nd floor laundry. A finished lower level w/family room, 6th bedroom/flex room and full bath, complete this beautiful home.



LOWER LEVEL 925 SQ.FT.



FIRST FLOOR 1,671 SQ.FT.



SECOND FLOOR 1,829 SQ.FT.

© Romanelli & Hughes Building Co.  
 All home plans present on this brochure are protected by copyright. Reproduction either in whole or in part without written permission is strictly prohibited. All renderings and floor plans are artists' conceptions and are not intended to be an actual depiction of the home or its surroundings.

