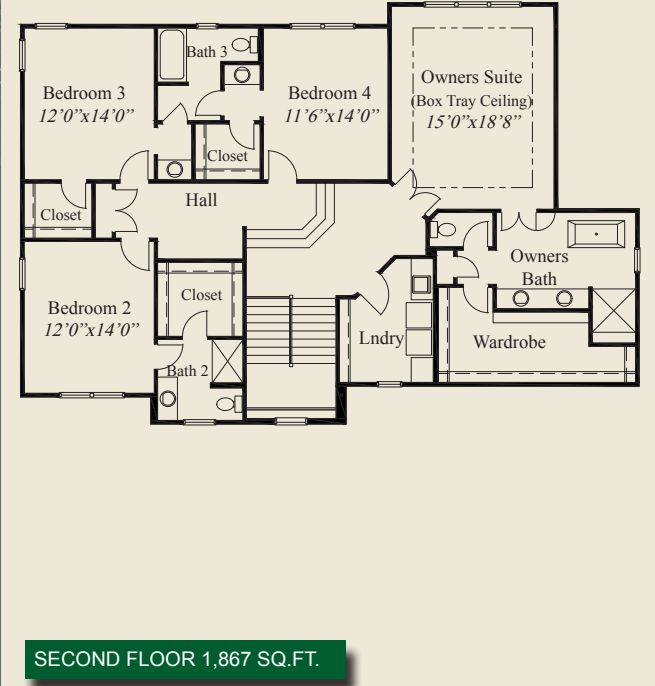
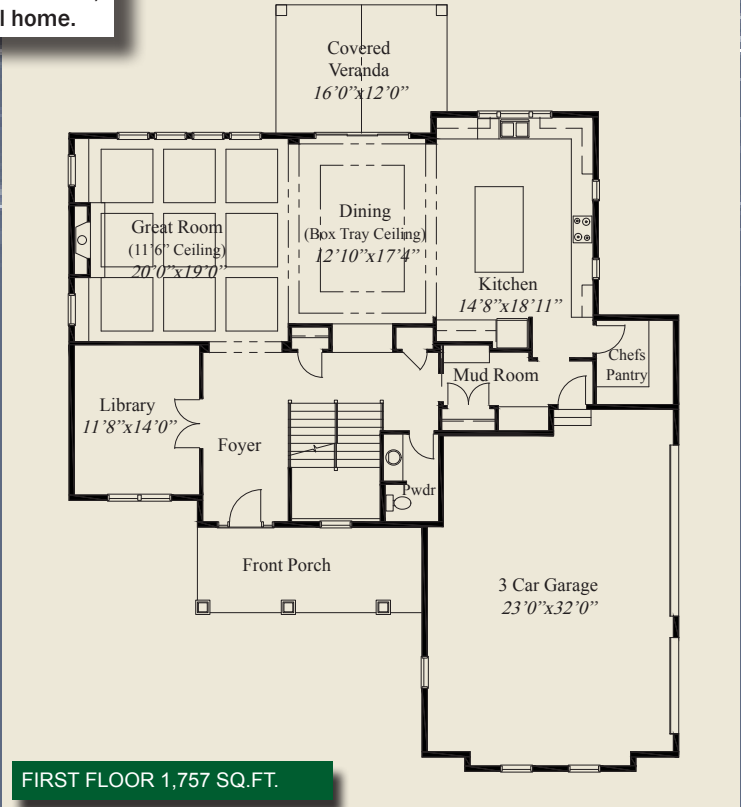
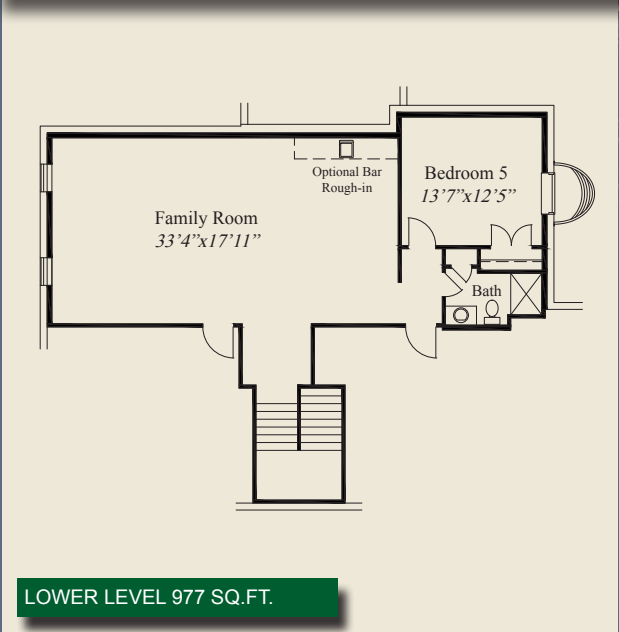




- ### Plan Information
- 4,601 SqFt
  - 5 Bedrooms
  - 4 1/2 Baths
  - 3 Car Garage
  - 10' First Floor Ceilings w/8' Doors
  - Dining & Owners Suite w/Box Tray Ceiling
  - 11' 6" Boxed Beam Ceiling in Great Room
  - Huge Kitchen w/Chefs Pantry
  - Library w/French Doors
  - Covered Rear Veranda
  - Switchback Stairs w/Windows
  - 9' Second Floor Ceilings
  - Owners Bath w/Free Standing Tub, Oversize Shower
  - Huge Owners Wardrobe w/Optional Door to Laundry
  - 2nd Floor Laundry
  - All 2nd Flr Bedrooms w/Walk-in Closets
  - Large Mud Room w/Bench & Closet
  - Finished LL w/Huge Family Room, 5th Bedroom, Bath

This custom 2 story features 1st flr 10' ceilings and 8' doors, a 11' 6" great room w/boxed beam ceiling, and tray ceilings in the dining and owners suite. A large mud room includes a bench & closet. A formal foyer has french doors to the library. The kitchen includes a chefs pantry. Switchback stairs w/windows lead to a 2nd flr w/9' ceilings, deluxe owners suite w/oversize shower, free standing tub, and huge wardrobe w/opt. door to the laundry. All bedrooms include walk-in closets. A finished lower level w/ family room, 5th bedroom and full bath, complete this beautiful home.



© Romanelli & Hughes Building Co.  
 All home plans present on this brochure are protected by copyright. Reproduction either in whole or in part without written permission is strictly prohibited. All renderings and floor plans are artists' conceptions and are not intended to be an actual depiction of the home or its surroundings.

