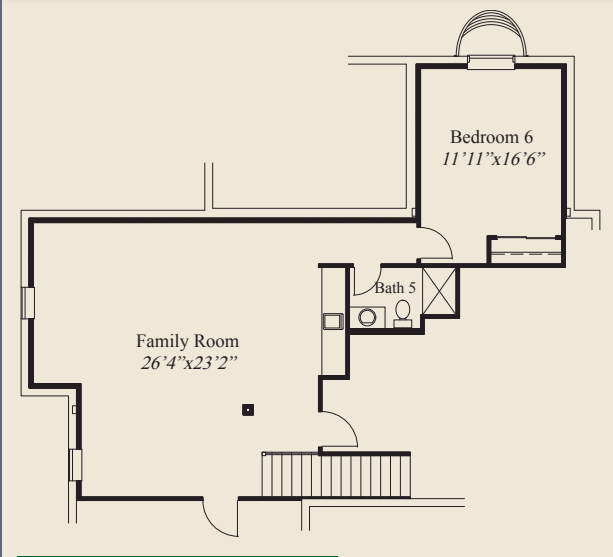




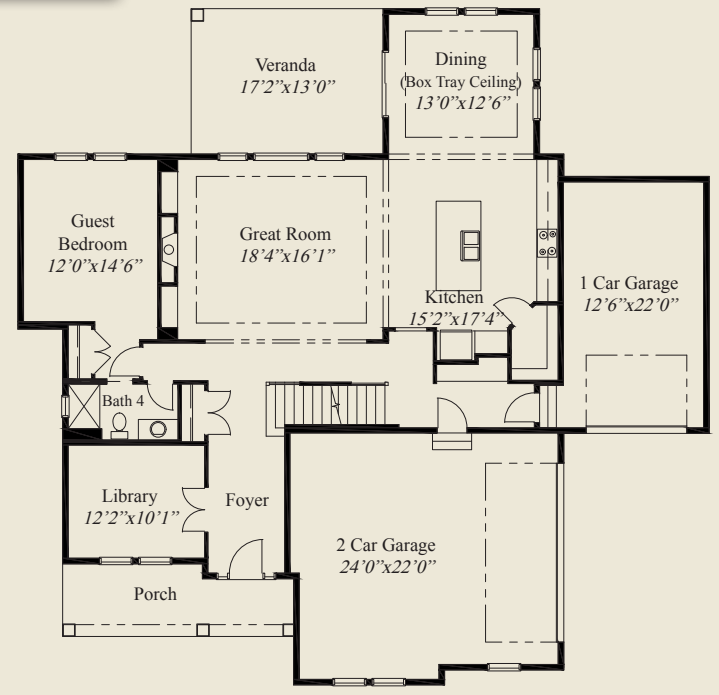
Plan Information

- 4,171 SqFt
- 6 Bedrooms
- 5 Baths
- 3 Car Garage (Split) /Mud Room w/Bench
- Large Front Porch
- 10' First Floor Ceilings w/8' Doors
- 9' Second Floor Ceilings
- Box Tray Ceilings in Great Room, Dining & Owners Suite
- Huge Kitchen w/Walk-in Pantry
- Library w/Glass French Doors
- First Floor Guest Bedroom
- Covered Rear Veranda
- Owners Suite w/Oversized Shower & Huge Wardrobe
- All 2nd Flr Bedrooms w/Walk-in Closets
- 2nd Floor Laundry Room
- Finished LL w/ Family Room, 6th Bedroom, Full Bath

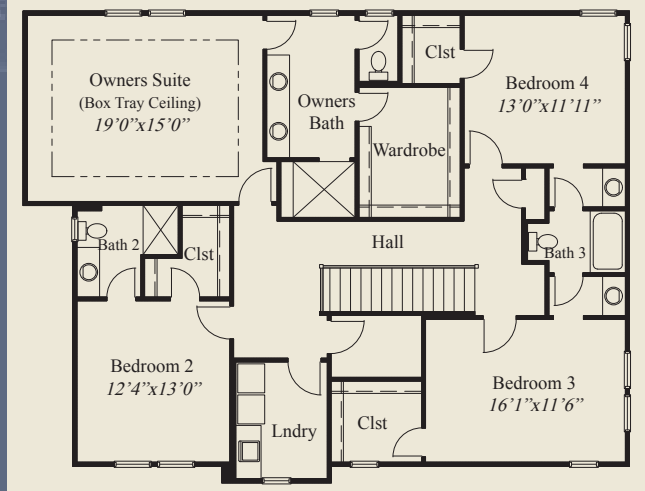
This custom 2 story features a large front porch, 1st flr 10' ceilings and 8' doors, tray ceilings in the great room, dining & owners suite, and a 2nd flr laundry. The library has glass french doors and the kitchen includes a walk-in pantry. A covered veranda, 1st flr guest bedroom, owners suite w/ oversize shower & huge wardrobe, 2nd flr bedrooms w/walk-in closets, a private bath and jack & jill bath, and a finished lower level w/family room, 6th bedroom and full bath, all add to the appeal of this beautiful home.



LOWER LEVEL 852 SQ.FT.



FIRST FLOOR 1,602 SQ.FT.



SECOND FLOOR 1,717 SQ.FT.

© Romanelli & Hughes Building Co.
 All home plans present on this brochure are protected by copyright. Reproduction either in whole or in part without written permission is strictly prohibited. All renderings and floor plans are artists' conceptions and are not intended to be an actual depiction of the home or its surroundings.

