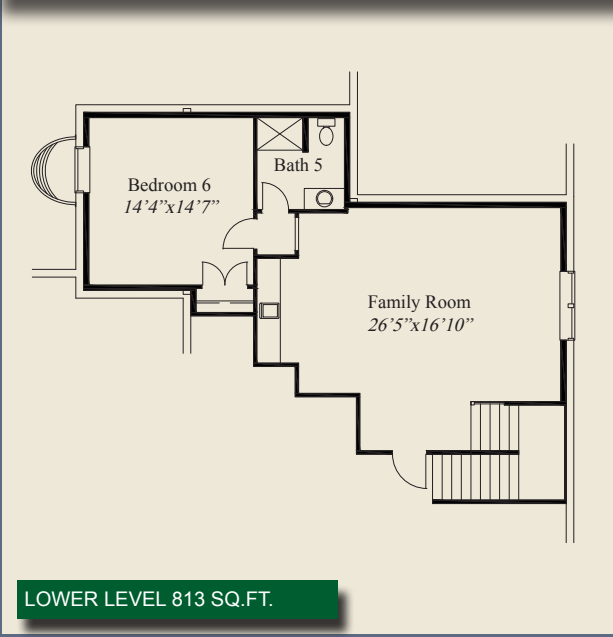


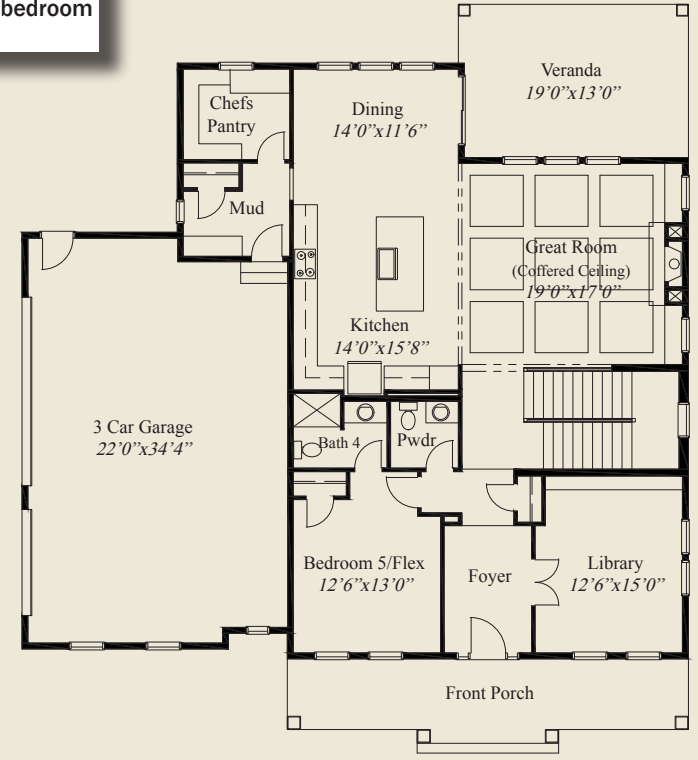


- ### Plan Information
- 4,398 SqFt
 - 6 Bedrooms
 - 5 1/2 Baths
 - 3 Car Garage (Oversized) /Mud Room w/Bench & Closet
 - Large Front Porch/Covered Rear Veranda
 - 11' First Floor Ceilings w/8' Doors
 - 9' Second Floor Ceilings
 - Switchback Stairs w/windows
 - Coffered Ceiling Great room
 - Huge Kitchen w/Chefs Pantry
 - Library w/Glass French Doors
 - First Floor Guest/Flex w/Private Bath
 - Owners Suite w/Double Doors, Free Standing Tub, Shower
 - Huge Owners Wardrobe
 - 2nd Floor Laundry
 - All 2nd Flr Bedrooms w/Walk-in Closets
 - Finished LL w/ Family Room, 6th Bedroom, Full Bath

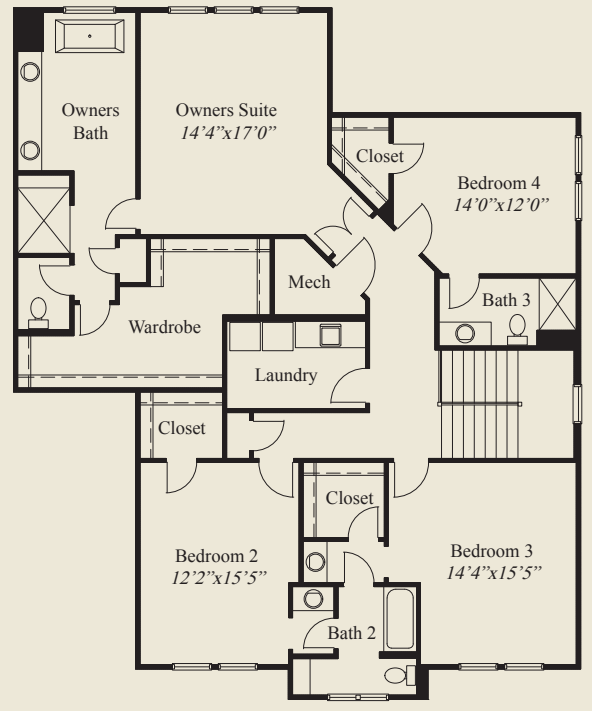
This custom 2 story features a large front porch, 1st flr 11' ceilings and 8' doors, a coffered ceiling great room, 1st flr guest suite/flex room w/ private bath, and a 2nd flr laundry. A mud room includes a bench & closet. The library has glass french doors and the kitchen includes a large chefs pantry. A covered veranda, switchback stairs w/windows, owners suite w/ oversize shower, free standing tub & huge wardrobe, 2nd flr bedrooms w/ walk-in closets, and a finished lower level w/family room, 6th bedroom and full bath, all add to the appeal of this beautiful home.



LOWER LEVEL 813 SQ.FT.



FIRST FLOOR 1,721 SQ.FT.



SECOND FLOOR 1,864 SQ.FT.

© Romanelli & Hughes Building Co.
 All home plans present on this brochure are protected by copyright. Reproduction either in whole or in part without written permission is strictly prohibited. All renderings and floor plans are artists' conceptions and are not intended to be an actual depiction of the home or its surroundings.

