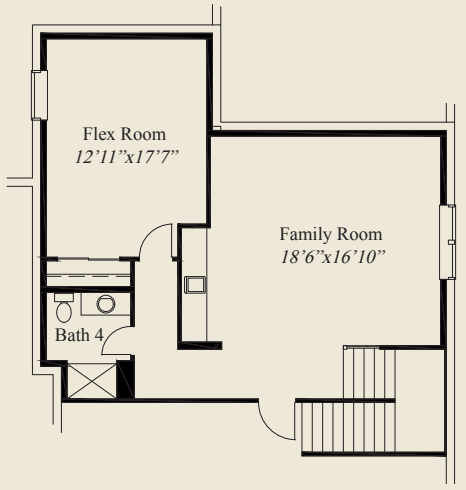




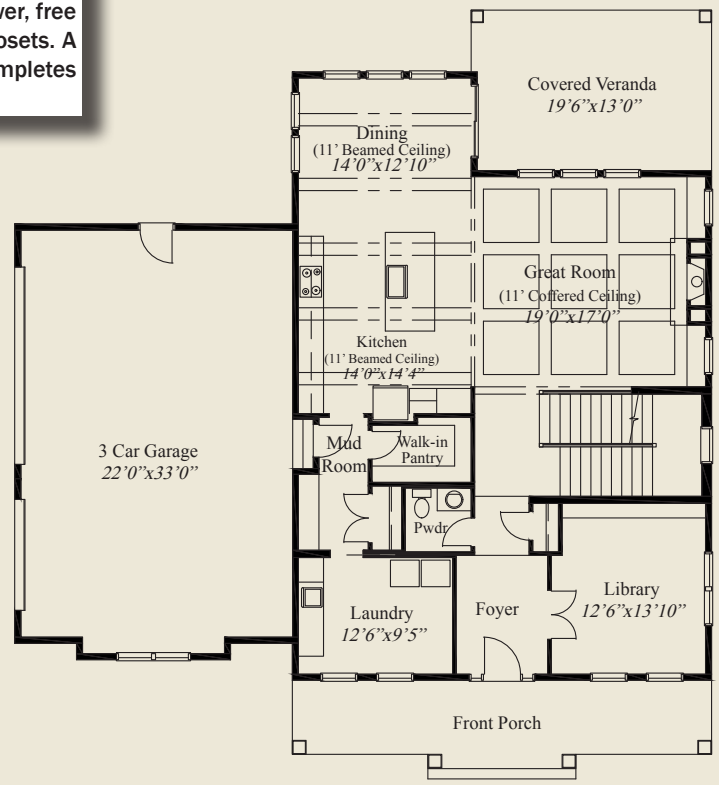
Plan Information

- 4,013 SqFt
- 4 Bedrooms
- 4 1/2 Baths
- 3 Car Garage
- Large Front Porch
- 11' First Floor Ceilings w/8' Doors
- Decorative Beamed Ceiling in Great Room, Kitchen, Dining
- Walk-in Pantry
- Library w/Double Doors
- Covered Rear Veranda
- Switchback Stairs w/Windows at each Landing
- Owners Suite w/Free Standing Tub, Oversize Shower
- Large Owners Wardrobe
- All Bedrooms w/Walk-in Closets
- Mud Room
- Finished LL w/Family Room, Flex Room, Bath

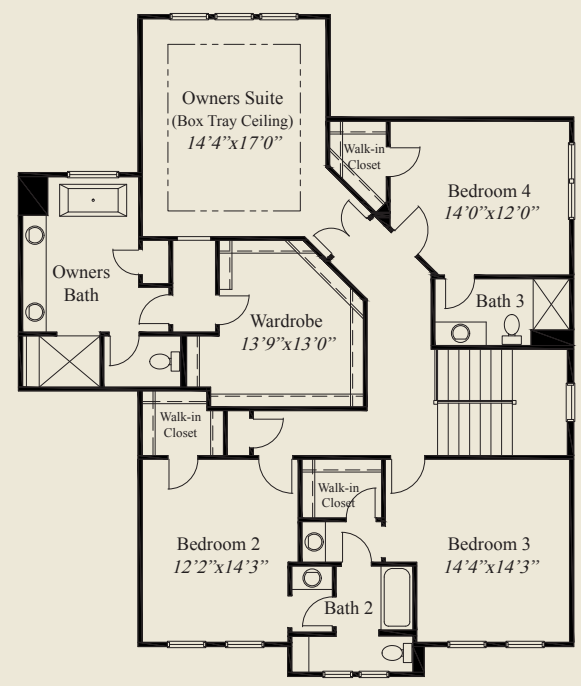
This custom design features a large front porch, a foyer w/double glass doors to the library, first floor 11' decorative beamed ceilings and 8' doors. The mud room includes a walk-in pantry adjacent to the spacious kitchen. Switchback stairs w/windows at each landing lead to a second floor owners suite featuring double doors, box tray ceiling, oversize shower, free standing tub, and huge wardrobe. All bedrooms include walk-in closets. A finished lower level with a huge family room, flex room and bath, completes this beautiful home.



LOWER LEVEL 786 SQ.FT.



FIRST FLOOR 1,518 SQ.FT.



SECOND FLOOR 1,709 SQ.FT.



© Romanelli & Hughes Building Co.
 All home plans present on this brochure are protected by copyright.
 Reproduction either in whole or in part without written permission
 is strictly prohibited. All renderings and floor plans are artists'
 conceptions and are not intended to be an actual depiction of the
 home or its surroundings.