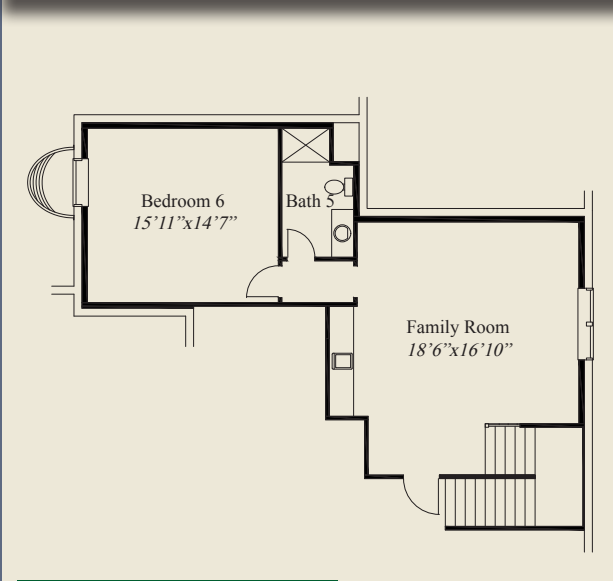




- ### Plan Information
- 4,598 SqFt
 - 6 Bedrooms
 - 5 1/2 Baths
 - 3 Car Garage
 - Large Front Porch
 - 11' First Floor Ceilings w/8' Doors
 - Detailed Raised Ceilings in Dining & Kitchen
 - 11' Boxed Beam Ceiling in Great Room
 - Huge Kitchen w/Chefs Pantry
 - First Floor Guest Suite w/Private Bath
 - Library w/French Doors
 - Covered Rear Veranda
 - Switchback Stairs w/Window
 - Owners Bath w/Free Standing Tub, Oversize Shower
 - Huge Owners Wardrobe
 - 2nd Floor Laundry
 - All 2nd Flr Bedrooms w/Walk-in Closets
 - Large Mud Room w/Bench & Closet
 - Finished LL w/Huge Family Room, 6th Bedroom, Bath

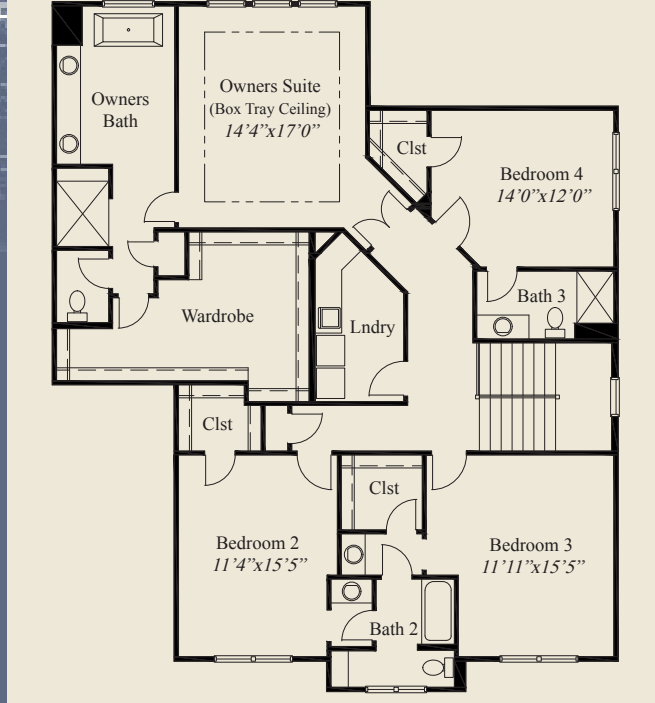
This custom design features 1st flr 11' ceilings and 8' doors, a great room w/boxed beam ceiling, and detailed ceilings in the kitchen & dining. A formal foyer has french doors to the library. The kitchen includes a chefs pantry. A 1st flr guest suite has a private bath. Switchback stairs w/ windows lead to a 2nd flr owners suite w/box tray ceiling, oversize shower, free standing tub, and huge wardrobe. Three other bedrooms include walk-in closets. A 2nd flr laundry and finished lower level w/family room, 6th bedroom and bath, complete this beautiful home.



LOWER LEVEL 977 SQ.FT.



FIRST FLOOR 1,757 SQ.FT.



SECOND FLOOR 1,864 SQ.FT.

