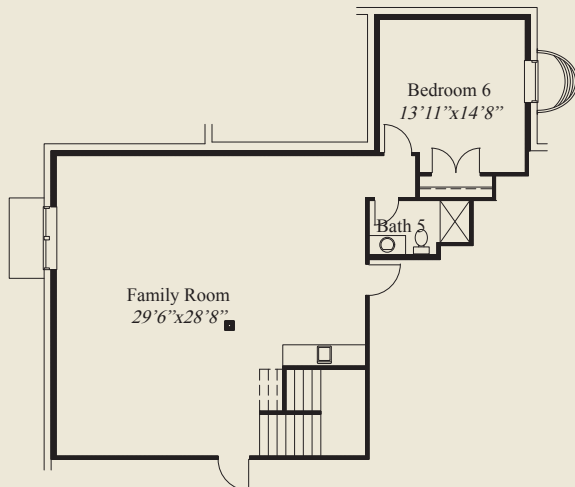




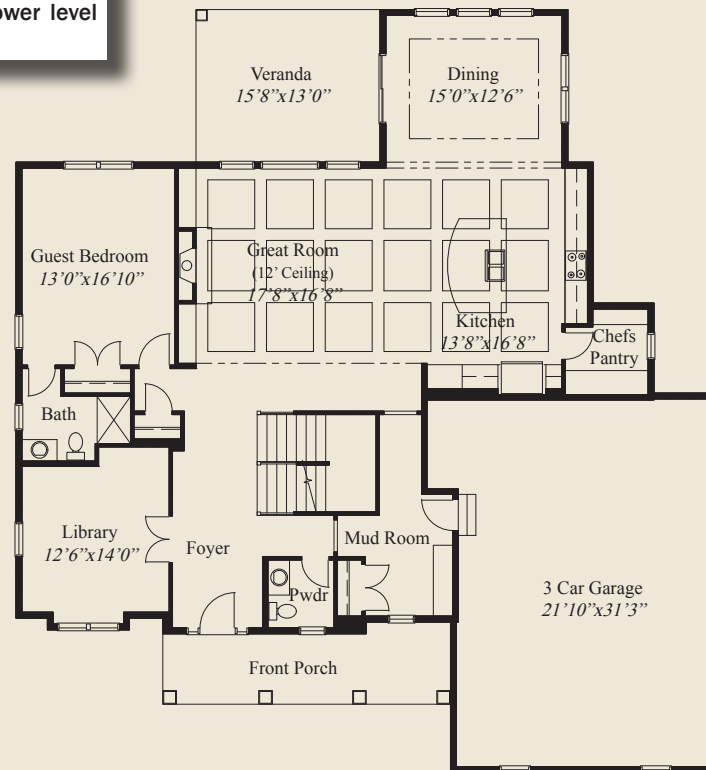
**Plan Information**

- 4,905 SqFt
- 6 Bedrooms
- 5 1/2 Baths
- 3 Car Garage
- Large Front Porch
- 10' First Floor Ceilings w/8' Doors
- 9' Second Floor Ceilings
- 12' Boxed Beam Ceiling in Great Room & Kitchen
- Huge Kitchen w/Chefs Pantry
- Dining w/Box Tray Ceiling
- First Floor Guest Suite w/Private Bath
- Library w/Double Doors
- Covered Rear Veranda
- Switchback Stairs
- Owners Suite w/Free Standing Tub, Oversize Shower
- Huge Owners Wardrobe; 2nd Floor Laundry
- All 2nd Flr Bedrooms w/Walk-in Closets
- Mud Room
- Finished LL w/Family Room, Bedroom, Bath

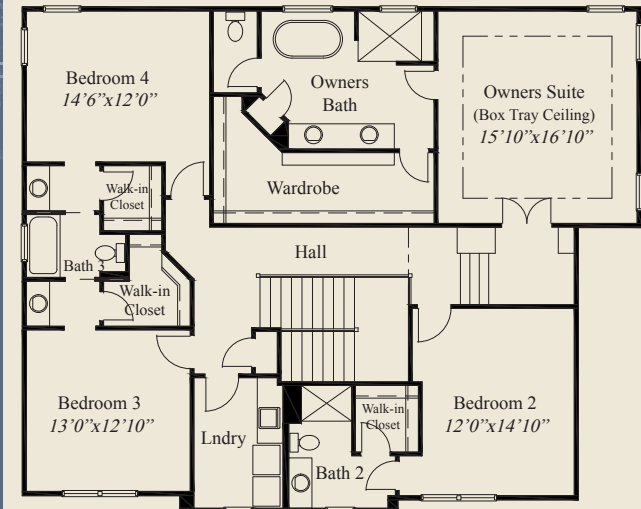
This custom design features a large front porch, foyer w/double doors to the library, and first floor 10' ceilings and 8' doors. The great room & kitchen have a 12' boxed beam ceiling. The kitchen includes a chefs pantry. A first floor guest suite has a private bath. Switchback stairs lead to second floor 9' ceilings, an owners suite w/double doors, box tray ceiling, oversize shower, free standing tub, and large wardrobe. Three other bedrooms include walk-in closets. A second floor laundry and finished lower level family room, bedroom and bath, complete this beautiful home.



LOWER LEVEL 1,122 SQ.FT.



FIRST FLOOR 1,952 SQ.FT.



SECOND FLOOR 1,831 SQ.FT.



© Romanelli & Hughes Building Co.  
All home plans present on this brochure are protected by copyright. Reproduction either in whole or in part without written permission is strictly prohibited. All renderings and floor plans are artists' conceptions and are not intended to be an actual depiction of the home or its surroundings.