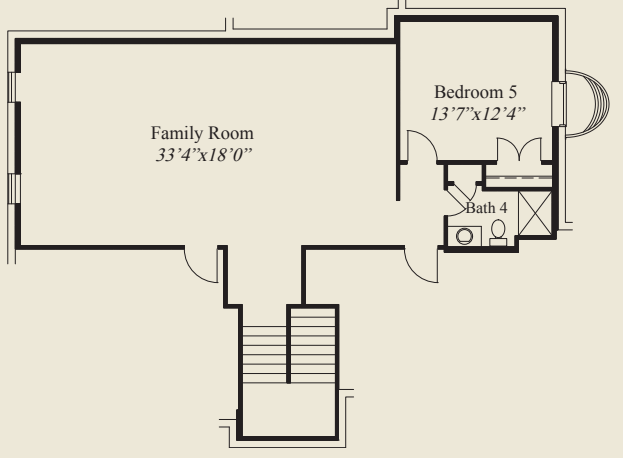




This custom design features a large front porch, a foyer w/double doors to the library, and first floor 10' ceilings and 8' doors. The great room has a 12' box beam ceiling. The spacious kitchen includes a chefs pantry. Switchback stairs w/windows lead to a second floor w/9' ceilings, an owners suite w/double doors, box tray ceiling, oversize shower, free standing tub, huge wardrobe, and adjacent laundry. Three other bedrooms include walk-in closets. A finished lower level, with a huge family room, bedroom and bath, completes this beautiful home.

Plan Information

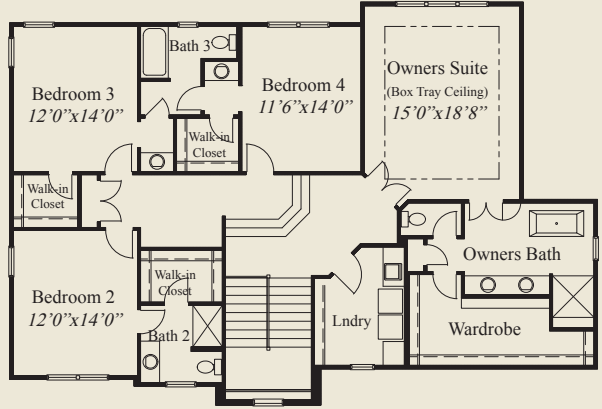
- 4,563 SqFt
- 5 Bedrooms
- 4 1/2 Baths
- 3 Car Garage
- Large Front Porch
- 10' First Floor Ceilings w/8' Doors
- 9' Second Floor Ceilings
- 12' Box Beam Ceiling Great Room
- Huge Kitchen w/Chefs Pantry
- Detailed Ceiling Dining
- Library w/Double Doors
- Covered Rear Veranda
- Switchback Stairs w/Windows
- Owners Suite w/Free Standing Tub, Oversize Shower
- Huge Owners Wardrobe; 2nd Floor Laundry
- All 2nd Flr Bedrooms w/Walk-in Closets
- Mud Room
- Finished LL w/Family Room, Bedroom, Bath



LOWER LEVEL 977 SQ.FT.



FIRST FLOOR 1,732 SQ.FT.



SECOND FLOOR 1,854 SQ.FT.



© Romanelli & Hughes Building Co. All home plans present on this brochure are protected by copyright. Reproduction either in whole or in part without written permission is strictly prohibited. All renderings and floor plans are artists' conceptions and are not intended to be an actual depiction of the home or its surroundings.