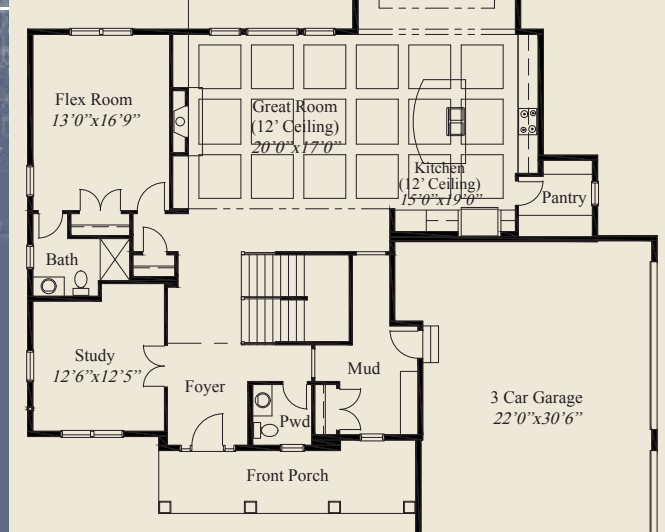
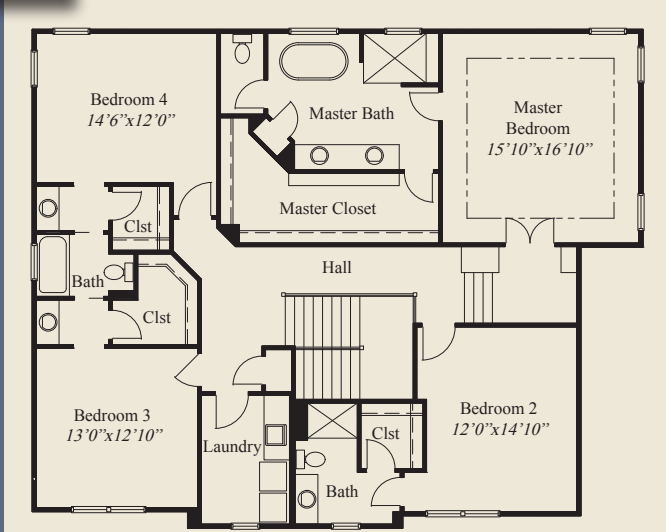
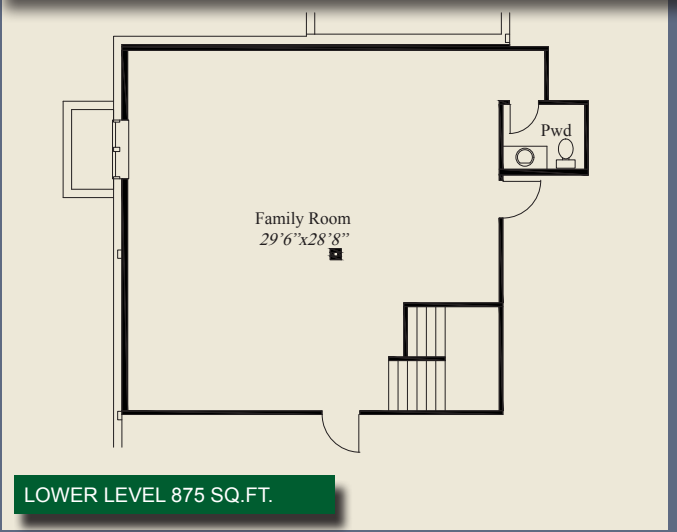




- ### Plan Information
- 4,658 SqFt
 - 4 Bedrooms
 - 3 Baths + 1/2 + 1/2
 - 3 Car Garage (Oversize w/Storage)
 - 12' Beamed/Decorative Ceilings
 - Study w/Glass French Doors
 - Pantry w/Appliance Counter
 - First Floor Flex/Guest Bedroom w/Bath
 - 2nd Floor Laundry Room
 - All Bedrooms w/Walk-in Closets
 - Huge Covered Rear Veranda
 - Second Floor Laundry
 - Master w/Shower & Free Standing Tub
 - Finished LL w/Family Room, Pwd



This custom design features 8' doors on the first floor and 12' beamed/decorative ceilings in the great room, kitchen, and dining. The formal foyer has glass french doors to the study. The kitchen has a huge pantry with an appliance counter. The first floor flex/guest bedroom includes a private bath. The master suite features a free standing tub, huge shower, and massive walk-in closet. A second floor laundry and a finished lower level family room complete this beautiful home.



© Romanelli & Hughes Building Co.
 All home plans present on this brochure are protected by copyright.
 Reproduction either in whole or in part without written permission is strictly prohibited.

