

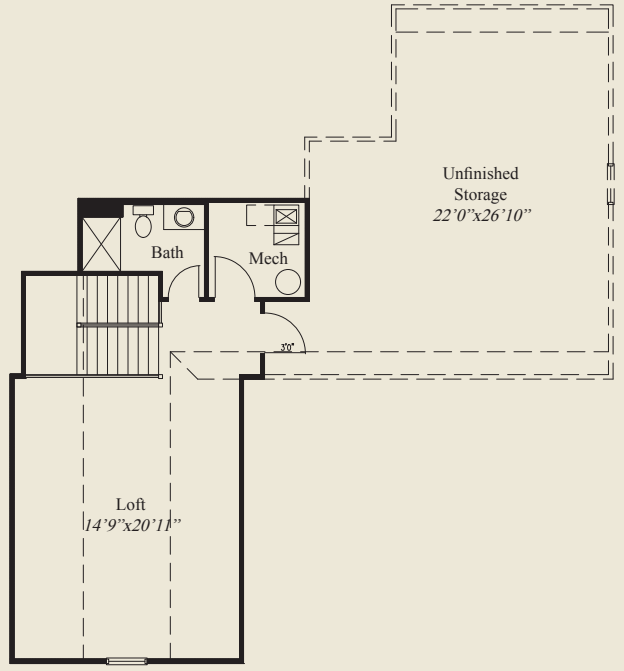


- Plan Information**
- 2,754 SqFt
 - 2 Bedrooms
 - 3 1/2 Baths
 - 2 Car Garage
 - Large Front Porch
 - 10' Ceilings, 8' Doors on First Floor
 - Great Room w/12' Detailed Ceiling
 - Box Tray Ceilings in Foyer, Dining, Owners Suite
 - Kitchen w/Chefs Pantry & Pocket Office
 - Owners Suite w/Oversize Shower & Wardrobe
 - Wardrobe w/Optional Access to Laundry
 - 1st Floor Guest Suite/Flex Room
 - Large Rear Veranda
 - Large Second Floor Loft w/Full Bath
 - Huge Unfinished Storage Room

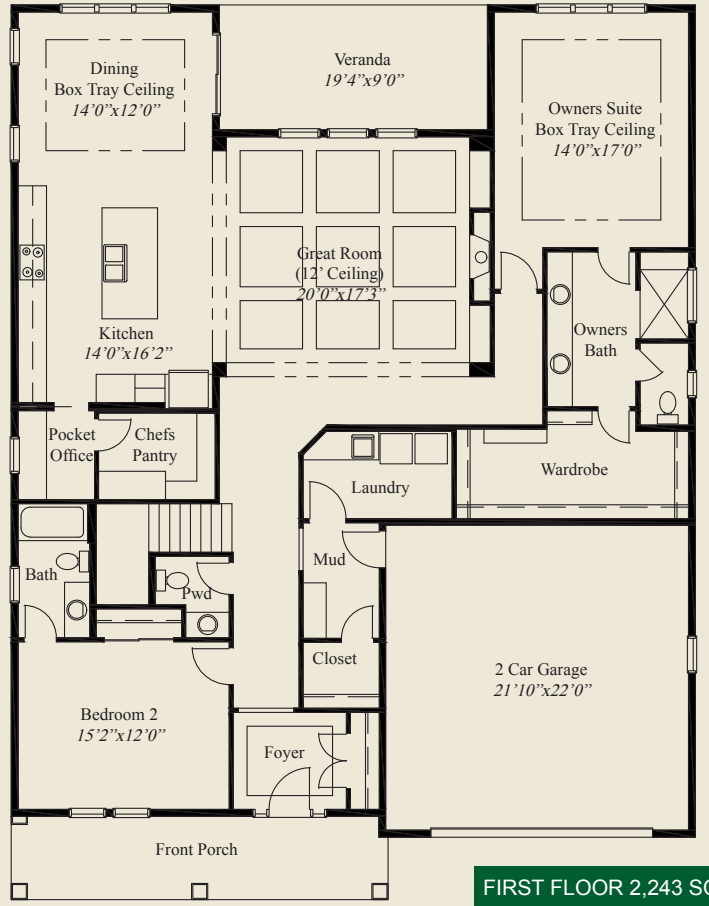
Home Information

This custom patio home features easy access with open living and entertaining, and a 12' detailed ceiling in the great room. Box tray ceilings adorn the foyer, dining and owners suite. The kitchen includes a chefs pantry and pocket office. The owners suite has an oversized shower and huge wardrobe with optional access to the laundry. A rear veranda, first floor guest suite/flex room, and a large second floor loft with full bath and unfinished storage room, complete this beautiful home.

© Romanelli & Hughes Building Co. All home plans present on this brochure are protected by copyright. Reproduction either in whole or in part without written permission is strictly prohibited. All renderings and floor plans are artists' conceptions and are not intended to be an actual depiction of the home or its surroundings.



SECOND FLOOR 511 SQ.FT.



FIRST FLOOR 2,243 SQ.FT.

