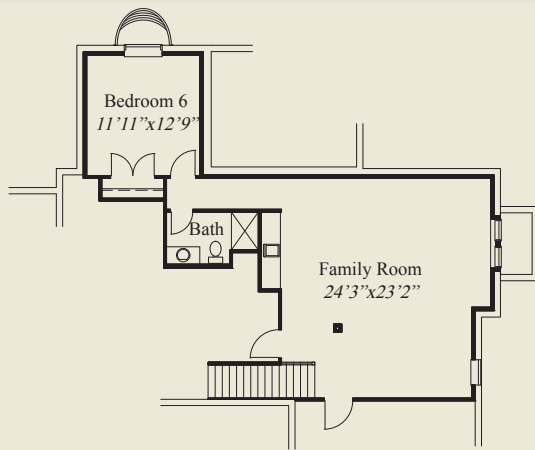




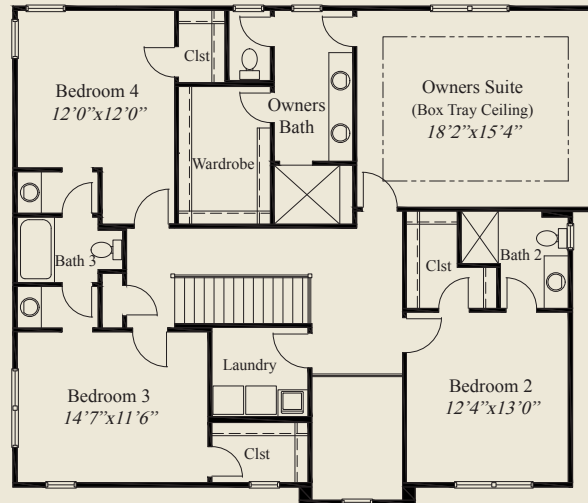
This custom 2 story home features 10' ceilings and 8' doors on the 1st floor, detailed ceilings in the great room, dining & owners suite, a 2 story foyer w/elegant doors to the library, and a huge covered veranda. A spacious kitchen includes a large walk-in pantry. The garage mud entry includes a bench & closet. A guest bedroom completes the 1st floor. The 2nd floor includes 9' ceilings, a spacious laundry, and the owners suite with oversized shower and huge wardrobe. Three other bedrooms all have walk-in closets. A finished lower level, with huge family room, wet bar, 6th bedroom, and full bath, adds to the appeal of this beautiful home.

**Plan Information**

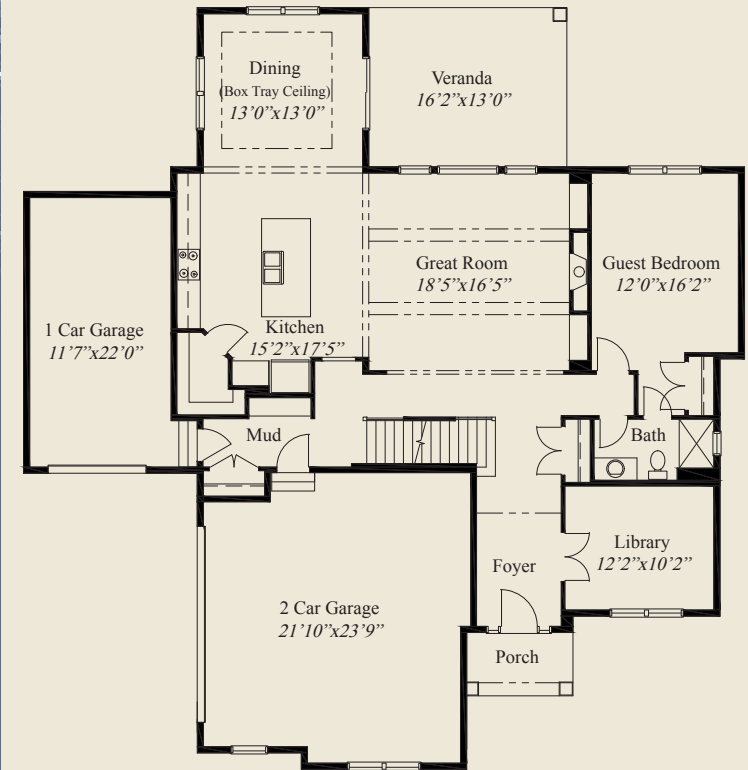
- 3,922 SqFt
- 6 Bedrooms
- 5 Baths
- 3 Car Garage (Split)
- 2 Story Foyer w/Elegant Library Doors
- Mud Room w/Bench & Closet
- 10' Ceilings, 8' Doors on 1st Floor
- Detailed Ceilings in Great Rm, Dining , Owners Suite
- Kitchen w/Large Walk-in Pantry
- Covered Rear Veranda
- 1st Floor Guest Bedroom
- 9' Second Floor Ceilings
- Owners Suite w/Oversized Shower, Huge Wardrobe
- 2nd Floor Laundry
- All Upstairs Bedrooms w/Walk-in Closets
- Finished LL Family Room, 5th Bedroom, Full Bath



LOWER LEVEL 812 SQ.FT.



SECOND FLOOR 1,538 SQ.FT.



FIRST FLOOR 1,572 SQ.FT.

© Romanelli & Hughes Building Co.  
 All home plans present on this brochure are protected by copyright. Reproduction either in whole or in part without written permission is strictly prohibited. All renderings and floor plans are artists' conceptions and are not intended to be an actual depiction of the home or its surroundings.

