



**Plan Information**

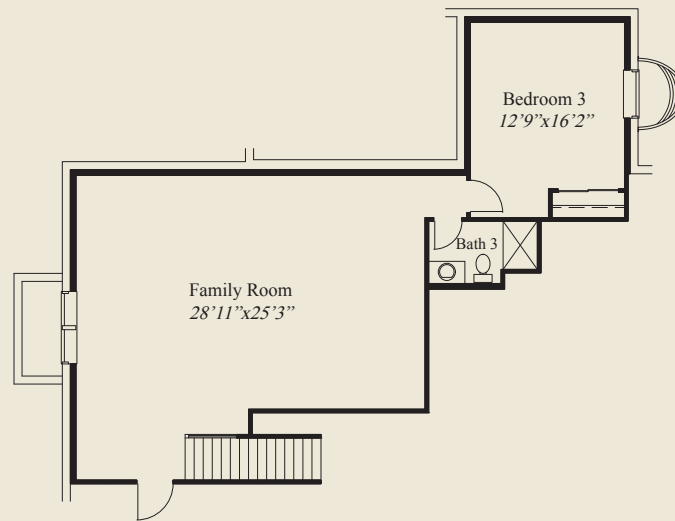
- 3,226 SqFt
- 3 Bedrooms
- 3 1/2 Baths
- 3 Car Garage (Oversize)
- 12' Ceiling Great Room
- Covered Veranda w/12' Ceiling
- 10' Ceilings, 8' Doors 1st Floor
- Kitchen w/Walk-in Pantry
- First Floor Guest Bedroom w/Private Bath
- Formal Foyer w/Double Doors to Library
- Owners Suite w/Oversized Shower & Wardrobe
- Mud Entry w/Bench & Closet and Adj. Laundry
- Lower Level Family Room, 3rd Bedroom, Bath

**Home Information**

This custom ranch home features 10' ceilings and 8' doors on the first floor and a 12' ceiling in the great room, and in the covered veranda. The formal foyer has double doors to the library. The kitchen includes a walk-in pantry w/appliance counter. The garage mud entry includes a bench, closet and adjacent laundry. The spacious owners suite features a box tray ceiling, oversized shower & huge wardrobe. A lower level family room, with additional bedroom and bath, completes this beautiful home.

© Romanelli & Hughes Building Co.

All home plans present on this brochure are protected by copyright. Reproduction either in whole or in part without written permission is strictly prohibited. All renderings and floor plans are artists' conceptions and are not intended to be an actual depiction of the home or its surroundings.



LOWER LEVEL 958 SQ.FT.



FIRST FLOOR 2,268 SQ.FT.

