

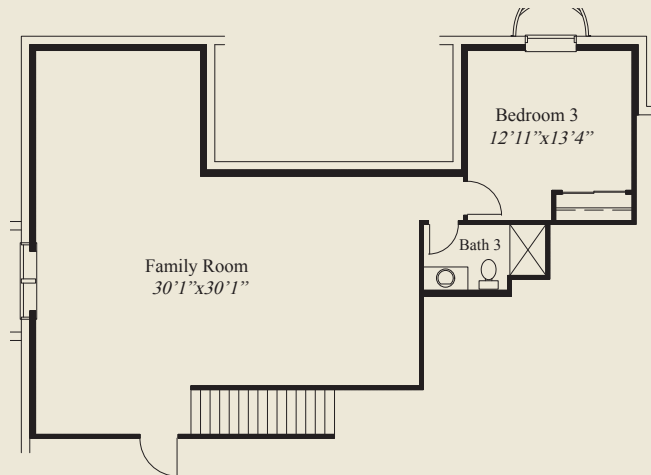


Plan Information

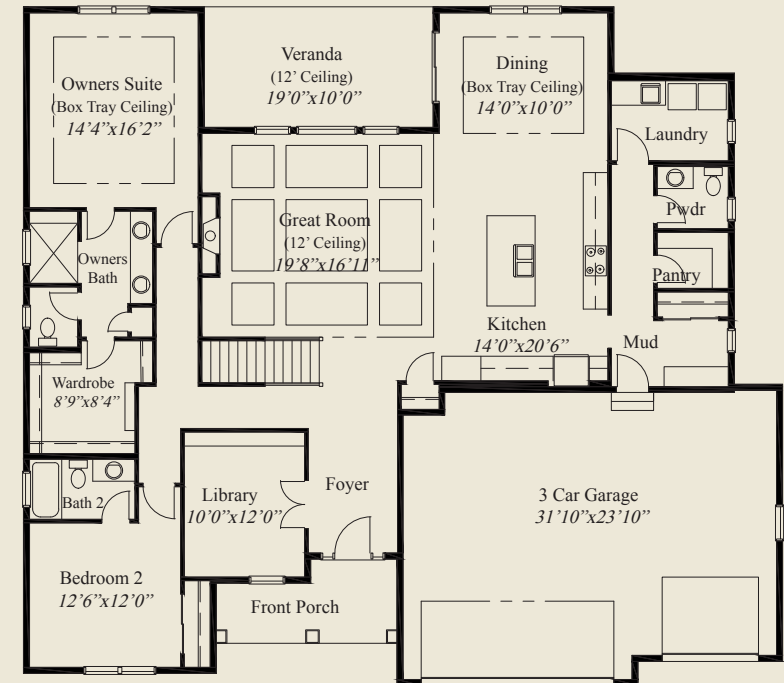
- 3,225 SqFt
- 3 Bedrooms
- 3 1/2 Baths
- 3 Car Garage (Oversize)
- 12' Decorative Ceiling Great Room
- Covered Veranda w/12' Ceiling
- 10' Ceilings, 8' Doors 1st Floor
- Spacious Kitchen & Dining w/Box Tray Ceiling
- First Floor Guest Bedroom w/Private Bath
- Formal Foyer w/Double Doors to Library
- Owners Suite w/Oversized Shower & Wardrobe
- Mud Entry w/Bench & Adj. Pantry & Laundry
- Lower Level Family Room, 3rd Bedroom, Bath

Home Information

This custom ranch home features 10' ceilings and 8' doors on the first floor and a 12' decorative ceiling in the great room, and a raised ceiling covered veranda. The formal foyer has double doors to the library. The open kitchen includes a dining area w/tray ceiling. The garage mud entry has a bench, closet and adjacent laundry. The spacious owners suite features a box tray ceiling, oversize shower & huge wardrobe. A lower level family room, with third bedroom and bath, completes this beautiful home.



LOWER LEVEL 972 SQ.FT.



FIRST FLOOR 2,253 SQ.FT.

© Romanelli & Hughes Building Co.
All home plans present on this brochure are protected by copyright. Reproduction either in whole or in part without written permission is strictly prohibited. All renderings and floor plans are artists' conceptions and are not intended to be an actual depiction of the home or its surroundings.

