



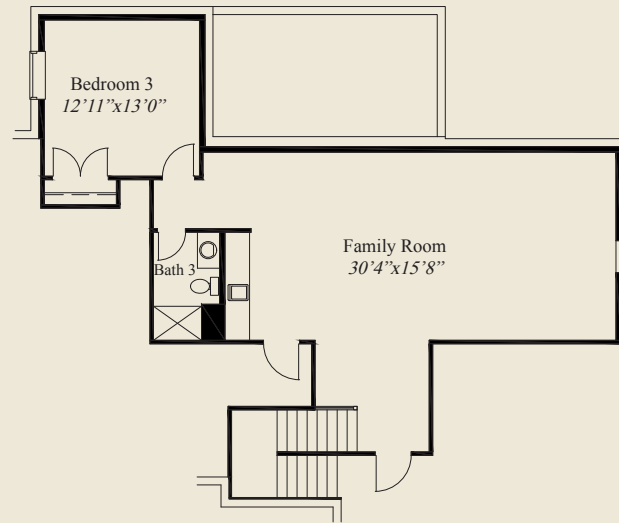
**Plan Information**

- 3,359 SqFt
- 3 Bedrooms
- 3 1/2 Baths
- 3 Car Garage (Oversize)
- Front Porch w/11' Ceiling
- 12' Box Beam Ceiling Great Room
- Covered Veranda w/12' Ceiling
- 10' Ceilings, 8' Doors 1st Floor
- Formal Foyer to Library w/Glass French Doors
- Kitchen w/Pocket Office & Chefs Pantry
- Dining w/Box Tray Ceiling
- First Floor Guest Bedroom w/Private Bath
- Owners Suite w/Huge Shower & Wardrobe
- Mud Room w/Bench
- Lower Level Family Room, 3rd Bedroom, Bath

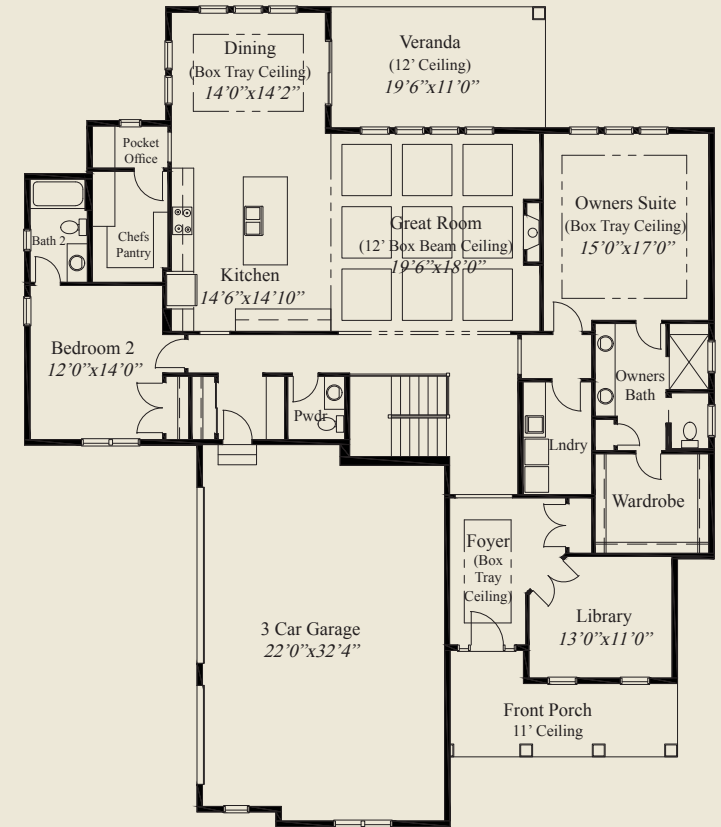
**Home Information**

This custom ranch features 1st flr 10' ceilings and 8' doors, 12' ceilings in the great room and the veranda, and a 11' ceiling front porch. The formal foyer includes glass french doors to the library. The kitchen has a dining area w/tray ceiling, pocket office & chefs pantry. A 1st flr guest room includes a private bath. The owners suite features a box tray ceiling, huge shower & large wardrobe. A lower level family room, with third bedroom and bath, completes this beautiful home.

© Romanelli & Hughes Building Co.  
All home plans present on this brochure are protected by copyright. Reproduction either in whole or in part without written permission is strictly prohibited. All renderings and floor plans are artists' conceptions and are not intended to be an actual depiction of the home or its surroundings.



LOWER LEVEL 918 SQ.FT.



FIRST FLOOR 2,441 SQ.FT.

