

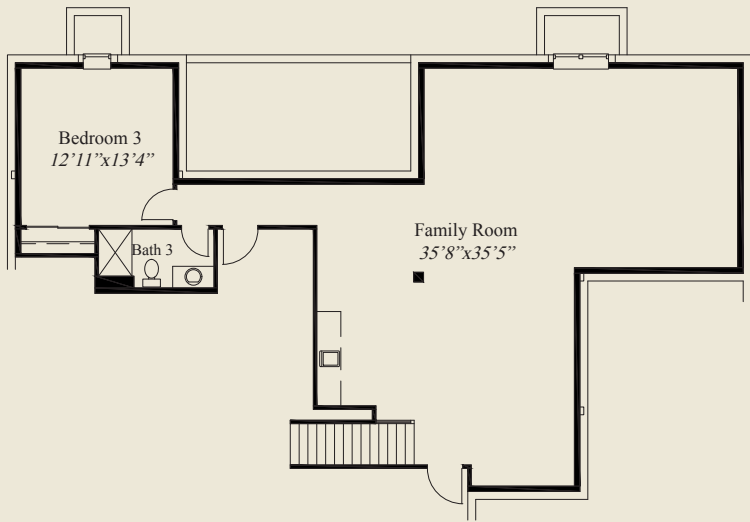


- Plan Information**
- 3,472 SqFt
 - 3 Bedrooms
 - 3 1/2 Baths
 - 3 Car Split Garage (Oversize)
 - 12' Detailed Ceiling Great Room
 - Covered Rear Veranda
 - 10' Ceilings, 8' Doors 1st Floor
 - Kitchen w/Large Walk-in Pantry
 - Raised Ceilings in Foyer & Owners Suite
 - Formal Foyer w/French Doors to Library
 - Owners Suite w/Huge Shower & Wardrobe
 - Lower Level Family Room, Bedroom, Bath
 - Large Mud Entry

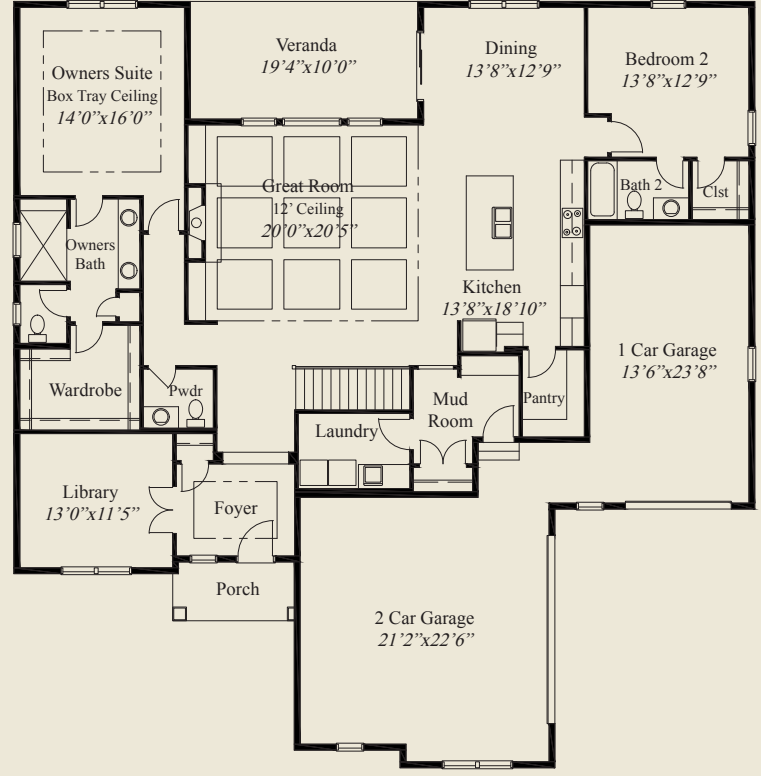
Home Information

This custom ranch home features open living & entertainment and a 12' detailed ceiling great room. 10' ceilings and 8' doors are throughout the first floor. There is a large mud entry from the garage and the formal foyer has double doors to the library. The spacious kitchen includes a large walk-in pantry. A covered rear veranda is adjacent to the dining area. The owners suite with an oversize shower & wardrobe, and a lower level family room with bedroom and bath, complete this beautiful home.

© Romanelli & Hughes Building Co.
 All home plans present on this brochure are protected by copyright. Reproduction either in whole or in part without written permission is strictly prohibited. All renderings and floor plans are artists' conceptions and are not intended to be an actual depiction of the home or its surroundings.



LOWER LEVEL 1,231 SQ.FT.



FIRST FLOOR 2,241 SQ.FT.

