



**Plan Information**

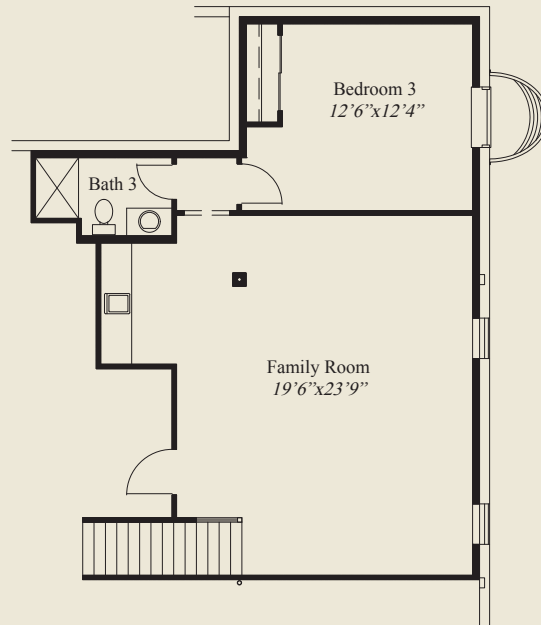
- 3,075 SqFt
- 3 Bedrooms
- 3 1/2 Baths
- 3 Car Garage w/3rd Bay Private Entry
- Formal Foyer w/Double Doors to Library
- Covered Rear Veranda w/Sloped Ceiling
- 10' Ceilings, 8' Doors 1st Floor
- Garage Mud Entry w/Bench, Storage Closet
- 12' Ceiling Great Room
- Large Walk-in Kitchen Pantry
- Owners Suite w/Boxtray Ceiling
- Large Wardrobe
- Guest Suite w/Private Bath
- Lower Level Family Room, Bedroom, Bath

**Home Information**

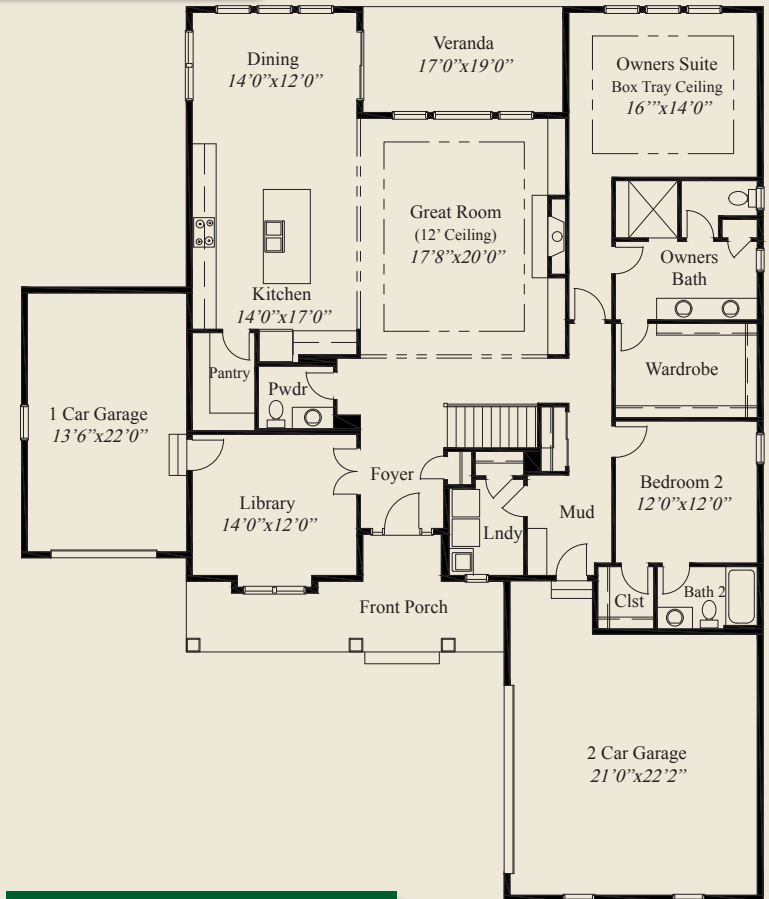
This custom home features a 12' ceiling great room, 10' ceilings and 8' doors on the first floor, and a 3 car garage with a 3rd bay private entry. The foyer has double doors to the library and a mud entry from the garage includes a bench and laundry access. The owners suite has a boxtray ceiling, extra large shower and huge wardrobe. A large walk-in pantry, a covered veranda with sloped ceiling, and a finished lower level with family room, bedroom & bath, complete this beautiful home.

© Romanelli & Hughes Building Co.

All home plans present on this brochure are protected by copyright. Reproduction either in whole or in part without written permission is strictly prohibited. All renderings and floor plans are artists' conceptions and are not intended to be an actual depiction of the home or its surroundings.



LOWER LEVEL 790 SQ.FT.



FIRST FLOOR 2,285 SQ.FT.

