

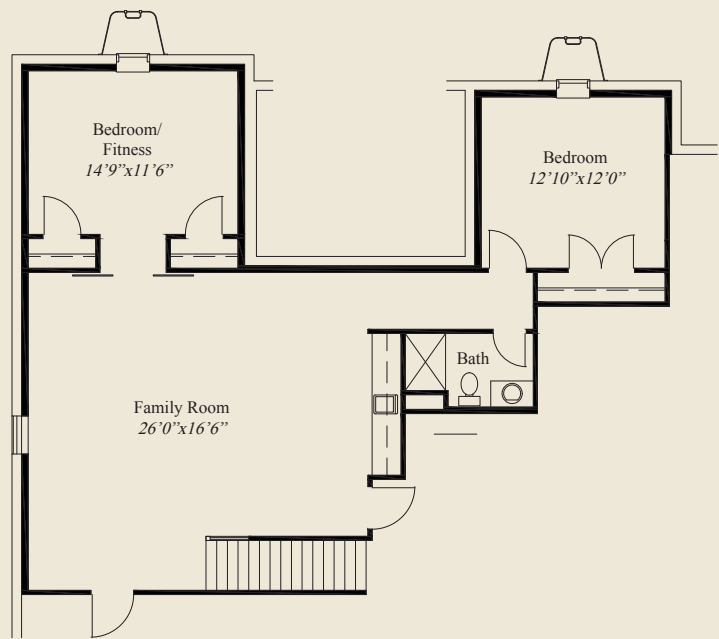


- ### Plan Information
- 3,297 SqFt
 - 3 Bedrooms
 - 3 1/2 Baths
 - 2 Car Garage
 - Large Front Porch
 - Private Mud Entry
 - 10' Ceilings, 8' Doors on First Floor
 - 12' Detailed Ceiling in Great Room & Kitchen
 - Box Tray Ceilings in Foyer, Dining, Owners Suite
 - Kitchen w/ Chefs Pantry & Pocket Office
 - Owners Suite w/ Oversize Shower & Wardrobe
 - Wardrobe w/ Door to Laundry
 - 1st Floor Guest Suite/Library
 - Large Rear Veranda
 - Finished Lower Level w/ Family Room & Bar
 - Additional Lower Level Flex/Bedroom/Fitness

Home Information

This custom patio home features open living and entertaining, and a 12' detailed ceiling in the great room and kitchen. Box tray ceilings adorn the foyer, dining and owners suite. The kitchen includes a chefs pantry and pocket office. The owners suite has an oversized shower and huge wardrobe with a door to the laundry. A rear veranda, first floor guest suite/library, and a finished lower level with family room, bar, bedrooms, and flex/bedroom/fitness room, complete this beautiful home.

© Romanelli & Hughes Building Co. All home plans present on this brochure are protected by copyright. Reproduction either in whole or in part without written permission is strictly prohibited. All renderings and floor plans are artists' conceptions and are not intended to be an actual depiction of the home or its surroundings.



LOWER LEVEL 1,084 SQ.FT.



FIRST FLOOR 2,213 SQ.FT.

