

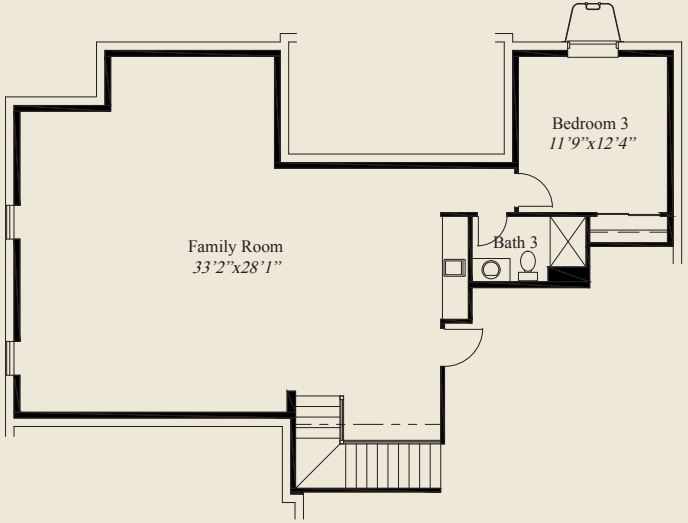


- ### Plan Information
- 3,225 SqFt
 - 3 Bedrooms
 - 3 1/2 Baths
 - 2 Car Garage
 - Mud Room w/Optional Bench
 - Great Room w/Box Beam 12' Ceiling
 - Kitchen w/Chefs Pantry
 - Covered Rear Veranda
 - Owners Suite w/Tray Ceiling, Shower, Wardrobe
 - Library w/Double Glass Doors
 - First Floor Guest Room w/Private Bath
 - Finished LL Family Room w/Bedroom, Bath

Home Information

This custom ranch features 10' ceilings and 8' doors throughout the first floor and a 12' box beam ceiling great room. The mud room entry has optional bench space. The library has french glass doors and the kitchen includes a chefs pantry. The spacious owners suite features a box tray ceiling, oversize shower, and large wardrobe. A first floor guest room with private bath, and a finished lower level family room with 3rd bedroom and full bath complete this beautiful home.

© Romanelli & Hughes Building Co. All home plans present on this brochure are protected by copyright. Reproduction either in whole or in part without written permission is strictly prohibited. All renderings and floor plans are artists' conceptions and are not intended to be an actual depiction of the home or its surroundings.



FINISHED LL 1,137 SQ.FT.



FIRST FLOOR 2,088 SQ.FT.

