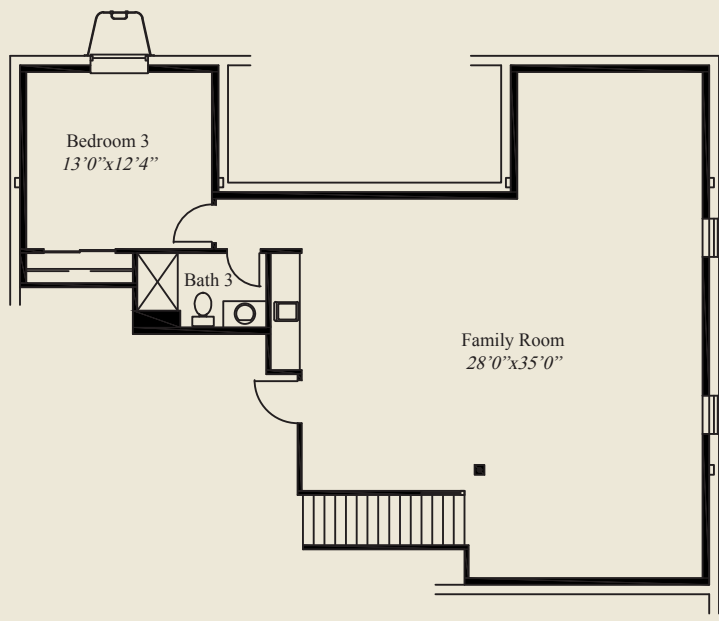




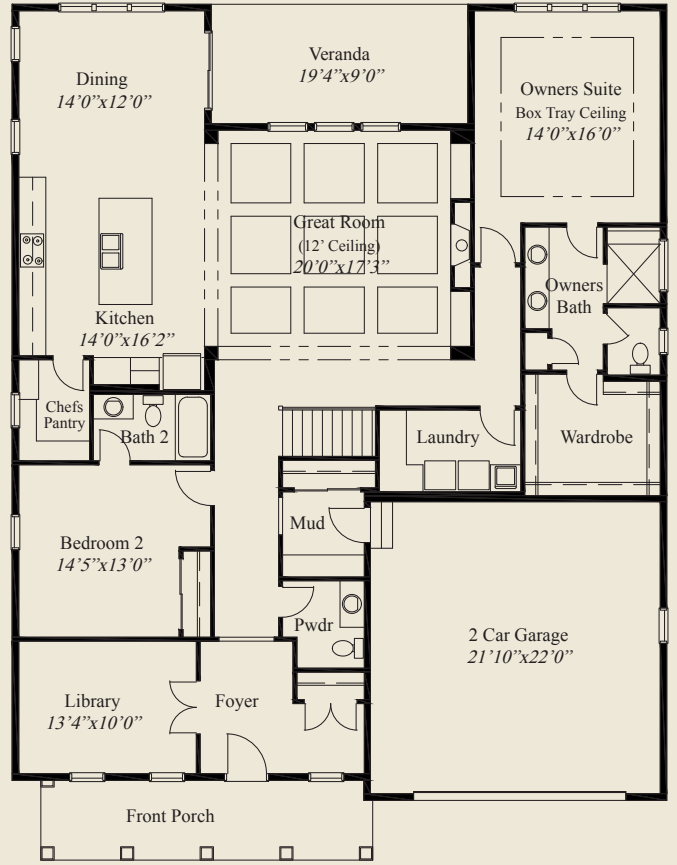
- ### Plan Information
- 3,368 SqFt
  - 3 Bedrooms
  - 3 1/2 Baths
  - 2 Car Garage
  - Large Front Porch
  - 10' Ceilings, 8' Doors on First Floor
  - Great Room w/12' Decorative Ceiling
  - Box Tray Ceiling in Owners Suite
  - Kitchen w/Chefs Pantry
  - Owners Suite w/Oversize Shower & Wardrobe
  - 1st Floor Guest Suite w/Private Bath
  - Large Covered Veranda
  - Library w/French Glass Doors
  - Finished LL w/Family Room, Bedroom, Bath

**Home Information**

This custom patio home features a huge front porch, open living and entertaining, and a 12' decorative ceiling in the great room. The kitchen includes a chefs pantry. The owners suite has a boxtray ceiling, oversized shower and huge wardrobe. A covered veranda, first floor guest suite w/private bath, library with french glass doors, mud entry from garage, and a finished lower level with family room, bedroom and full bath, complete this beautiful home.



FINISHED LL 1, 126 SQ.FT.



FIRST FLOOR 2,242 SQ.FT.

© Romanelli & Hughes Building Co. All home plans present on this brochure are protected by copyright. Reproduction either in whole or in part without written permission is strictly prohibited. All renderings and floor plans are artists' conceptions and are not intended to be an actual depiction of the home or its surroundings.

