

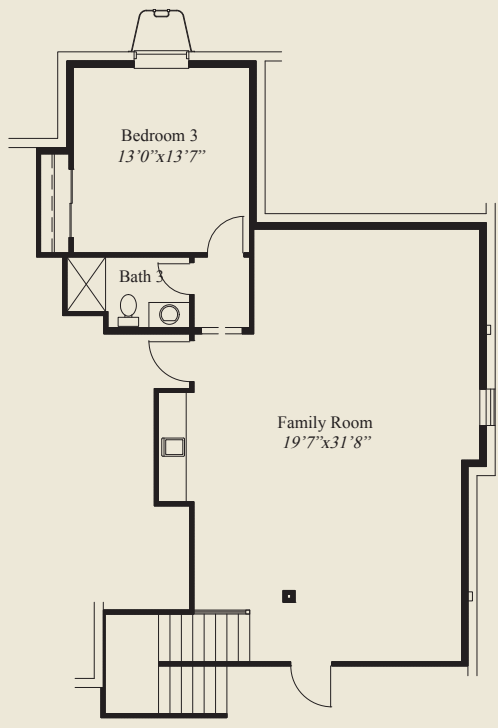


- ### Plan Information
- 3,223 SqFt
  - 3 Bedrooms
  - 3 Baths
  - 2 Car Garage w/Storage
  - Mud Room w/Optional Bench
  - Open Great Room, Kitchen, Dining, w/12' Ceiling
  - Walk-in Pantry w/Appliance Counter
  - Covered Veranda w/12' Ceiling
  - Owners Suite w/Huge Shower, Wardrobe
  - Laundry w/Wardrobe access
  - Library w/Double Glass Doors
  - First Floor Guest Room
  - Finished LL Family Room, 3rd Bedroom, Bath

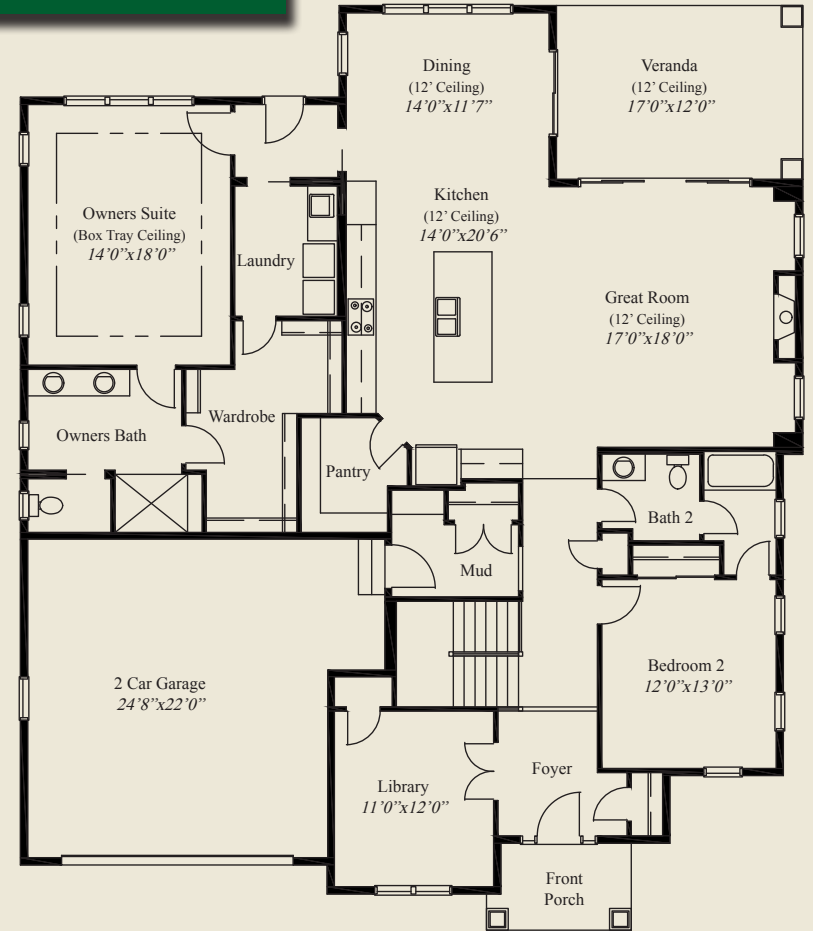
**Home Information**

This custom ranch features 10' ceilings, 8' doors, and 12' ceilings in the great room, kitchen, dining, and the veranda. The library has double glass doors and the two car garage includes extra storage space and a mud room entry with optional bench space. The kitchen includes a walk-in pantry with appliance counter, and the owners suite features, an oversize shower, large wardrobe and convenient access to the laundry. A first floor guest room and a finished lower level w/family room, bedroom, & bath, complete this beautiful home.

© Romanelli & Hughes Building Co. All home plans present on this brochure are protected by copyright. Reproduction either in whole or in part without written permission is strictly prohibited. All renderings and floor plans are artists' conceptions and are not intended to be an actual depiction of the home or its surroundings.



FINISHED LL 950 SQ.FT.



FIRST FLOOR 2273 SQ.FT.

